

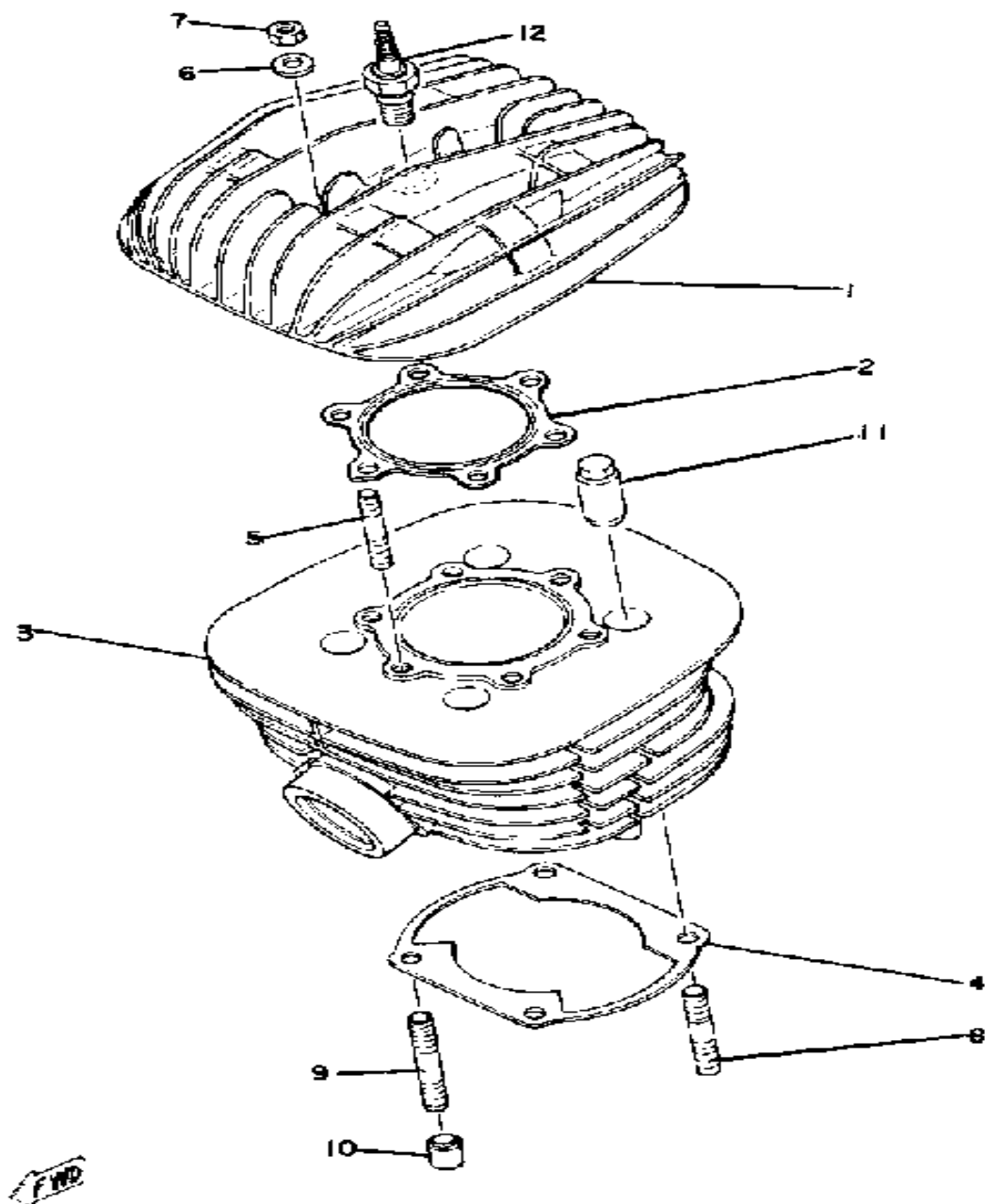
**YAMAHA**

**GENUINE**

**PARTS CATALOGUE**

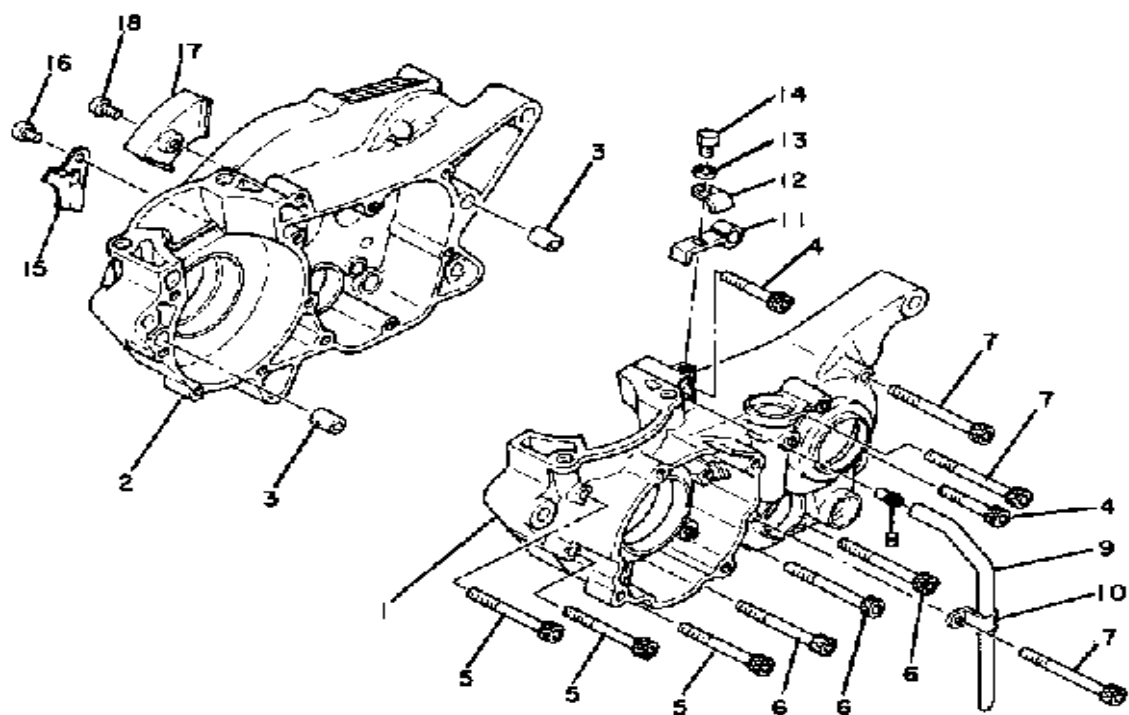
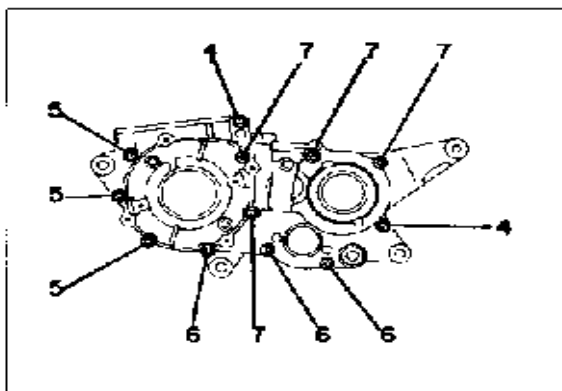
**MOTORCYCLE**

# CYLINDER HEAD-CYLINDER



Ref. No.	Part Number	Description	Qty	Remarks
1	(2X4-11111-00-00)	HEAD, CYLINDER 1 .....	1	
2	1W3-11181-00-00	GASKET, CYLINDER HEAD 1 .	1	
3	2X4-11311-00-00	CYLINDER 1 .....	1	
4	2K7-11351-00-00	GASKET, CYLINDER .....	1	
5	90116-08321-00	BOLT, STUD .....	6	
6	(2X4-00000-20-00)	GSKTKIT YZ250F .....	6	SEE GRID E-1 FOR KIT COMPONENT
	90201-08100-00	WASHER, PLATE .....	6	
7	95333-08600-00	NUT .....	6	
8	90116-10263-00	BOLT, STUD .....	2	
9	90116-10258-00	BOLT, STUD .....	2	
10	99530-14016-00	PIN, DOWEL .....	2	
11	90179-10201-00	NUT .....	4	
12	(CMP-N2G00-00-00)	CHAMPION N2G 10PK .....	1	CHAMPION

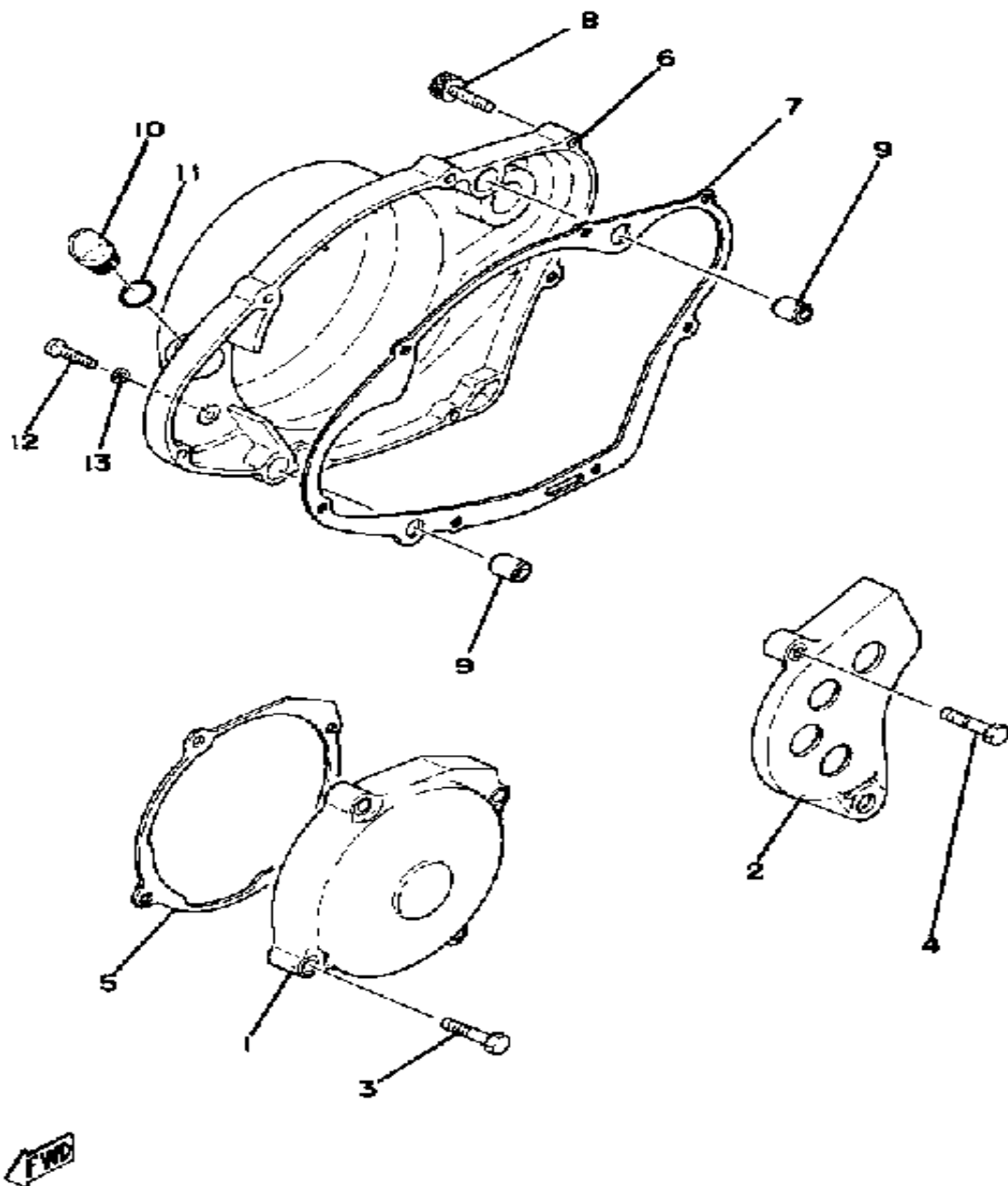
# CRANKCASE



Ref. No.	Part Number	Description	Qty	Remarks
1	2K7-15111-01-00	CRANKCASE 1 (2K7-15111-00)	1	
2	(2K7-15121-01-00)	CRANKCASE 2	1	
3	99510-12016-00	PIN, DOWEL	2	
4	91316-06045-00	BOLT	2	
5	91316-06065-00	BOLT, SOCKET HEAD	3	
6	91316-06070-00	BOLT, SOCKET HEAD	3	
7	91316-06075-00	BOLT	4	
8	137-13115-00-00	CONNECTOR, SCTN PPE	1	
9	90445-08376-00	HOSE	1	
10	90462-08042-00	CLAMP	1	
11	(2K7-15441-01-00)	HOLDER, CLCH CABLE	1	
12	90462-08042-00	CLAMP	1	
13	92995-06100-00	WASHER, SPRING	1	
14	97301-06014-00	BOLT, HEXAGON	1	
15	(2K7-15118-00-00)	HOLDER	1	
16	92501-08010-00	SCREW, PAN HEAD	1	
17	(2K7-15113-00-00)	PLATE	1	
18	98580-06010-00	SCREW, PAN HEAD	1	

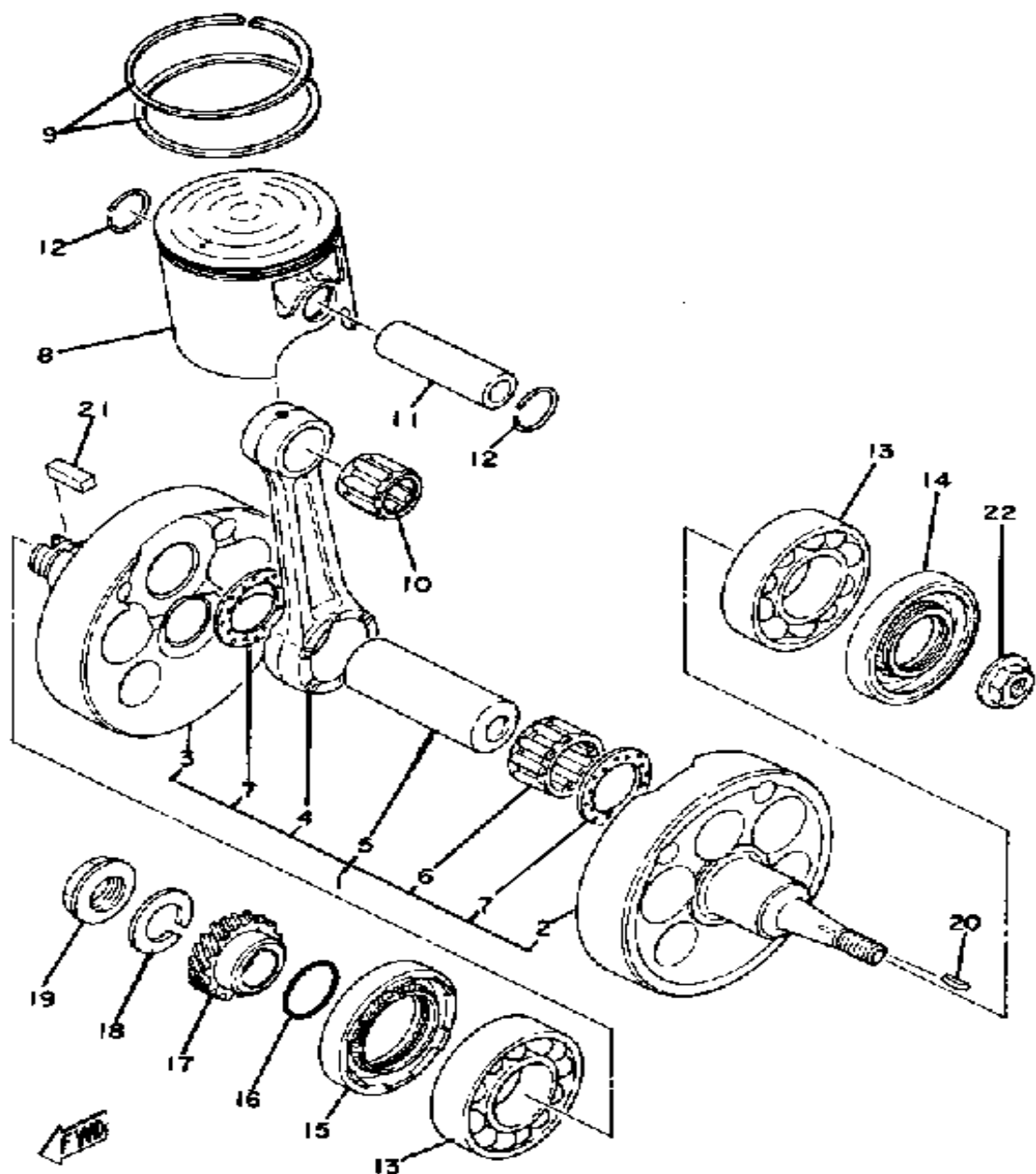


# CRANKCASE COVER



Ref. No.	Part Number	Description	Qty	Remarks
1	2K7-15411-00-00	COVER, CRANKCASE L	1	
2	2K7-15421-00-00	COVER, CRANKCASE R	1	
3	90110-06138-00	BOLT, HEX SOCKET HEAD	4	
4	91316-06025-00	BOLT	1	
5	2K7-15451-00-00	GASKET, CRCS COVER	1	
6	2K7-15431-01-00	COVER, CRANKCASE 3	1	
7	2K7-15462-00-00	GASKET, CRCS CVR 3	1	
	2X4-00000-00-00	UNAVAILABLE IN PRICE BOOK	1	SEE GRID E-1 FOR KIT COMPONENT
8	91316-06025-00	BOLT	7	
9	99510-12016-00	PIN, DOWEL	2	
10	1G8-15362-00-00	PLUG, OIL LEVEL	1	
11	93210-14104-00	O-RING	1	
12	98506-06008-00	SCREW, PAN HEAD	1	
13	90430-06016-00	GASKET	1	

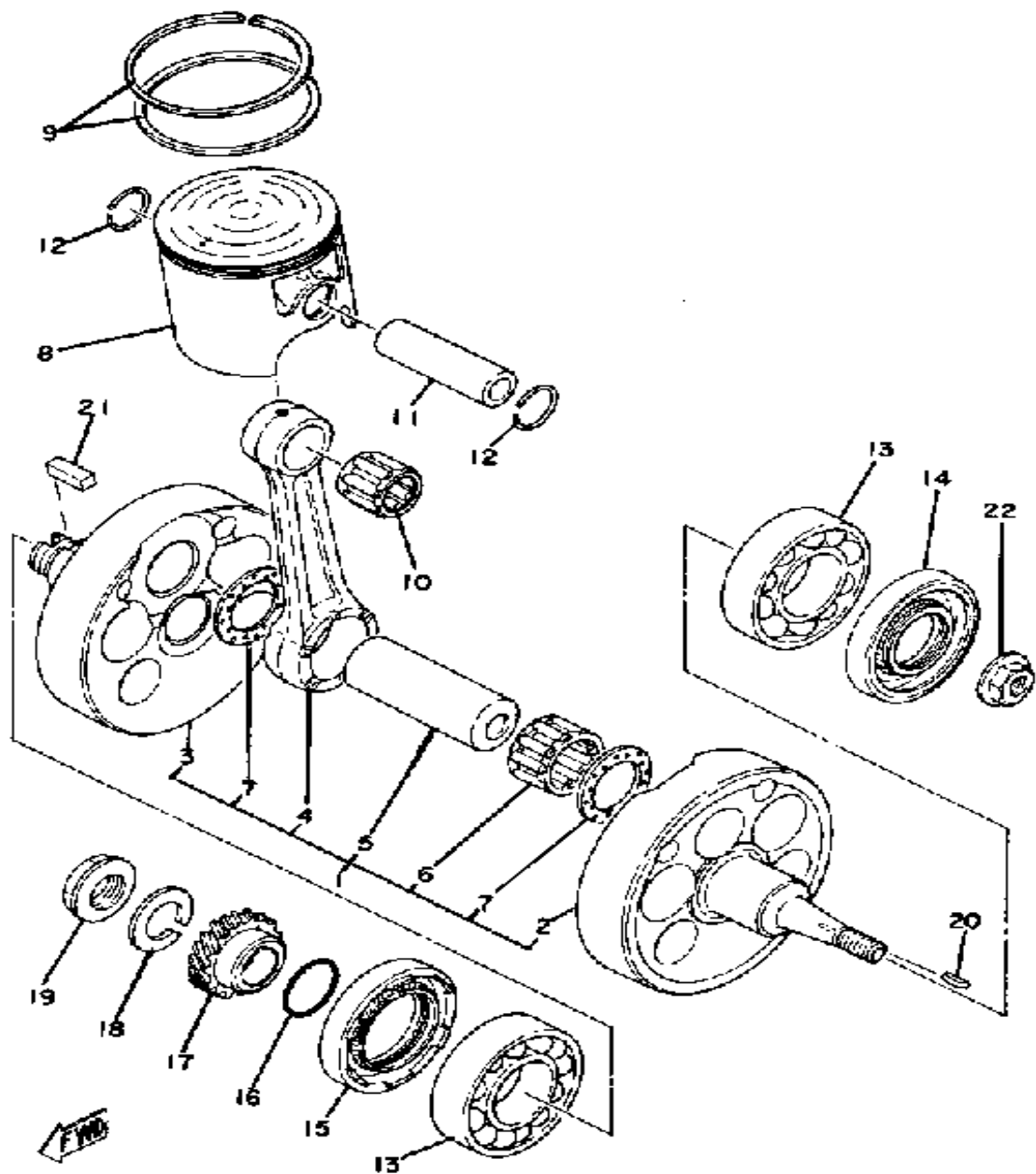
# CRANKSHAFT - PISTON



Ref. No.	Part Number	Description	Qty	Remarks
1	2X4-11311-00-00	CYLINDER 1 .....	1	
2	(2K7-11412-00-00)	CRANK 1 .....	1	
3	(1W3-11422-00-00)	CRANK 2 .....	1	
4	498-11651-00-00	. ROD, CONNECTING .....	1	
5	2X4-11681-00-00	. PIN, CRANK 1 .....	1	
6	93310-425N4-00	. BEARING, CYLINDRICAL ...	1	
7	90209-25085-00	. WASHER, (90209-25220) ....	1	
8	2K7-11631-01-96	PISTON STD (69.96MM STD) ..	1	
	2K7-11635-01-00	PISTON 1 O/S 0.25 (2K7-11635-00) (70.25MM 1ST OS) .....	1	ALTERNATE PART
	2K7-11636-01-00	PISTON 2 O/S 0.50 (2K7-11636-00) (70.50MM 2ND OS) .....	1	ALTERNATE PART
	2K7-11637-01-00	PISTON 3 O/S 0.75 (2K7-11637-00) (70.75MM 3RD OS) .....	1	ALTERNATE PART
	2K7-11638-01-00	PISTON 4 O/S 1.00 (2K7-11638-00) (71.00MM 4TH OS) .....	1	ALTERNATE PART
9	(2K7-11630-51-00)	PISTON KIT STD .....	1	
	(2K7-11630-61-00)	PISTON KIT 1ST O/S .....	1	ALTERNATE PART
	(2K7-11630-71-00)	PISTON KIT 2ND .....	1	ALTERNATE PART
	(2K7-11630-81-00)	PISTON KIT 3RD .....	1	ALTERNATE PART
	(2K7-11630-91-00)	PISTON KIT 4TH .....	1	ALTERNATE PART
	2X7-11601-00-00	PISTON RINGSET STD (STD) .	1	
	2X7-11601-10-00	PISTON RINGSET 1ST (1W5-11601-10) (1ST O.S.) ....	1	ALTERNATE PART
	2X7-11601-20-00	PISTON RINGSET 2ND (2ND O.S.) .....	1	ALTERNATE PART
	2X7-11601-30-00	PISTON RINGSET 3RD (3RD O.S.) .....	1	ALTERNATE PART

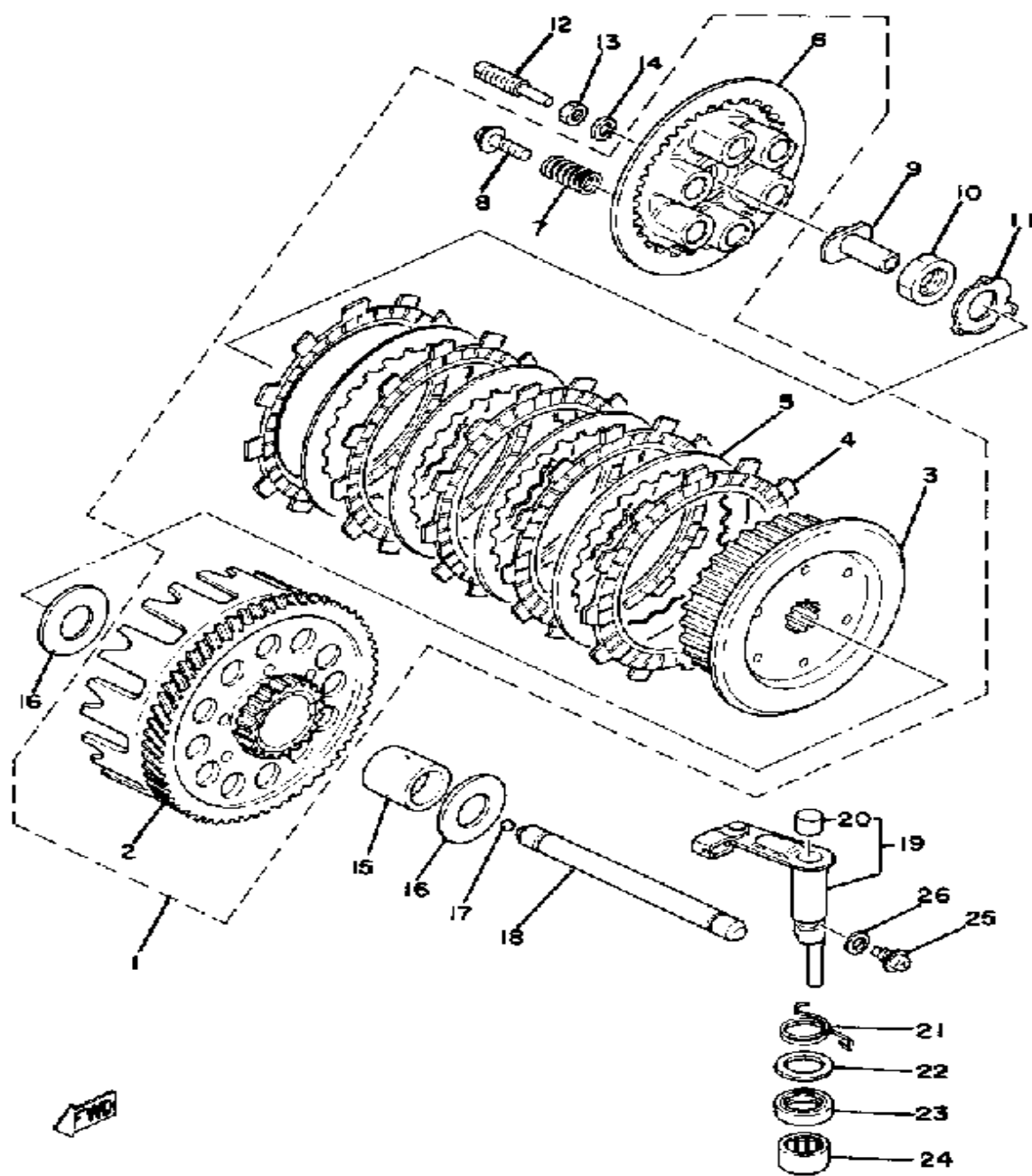
CONTINUED ON NEXT FRAME ►

# CRANKSHAFT - PISTON



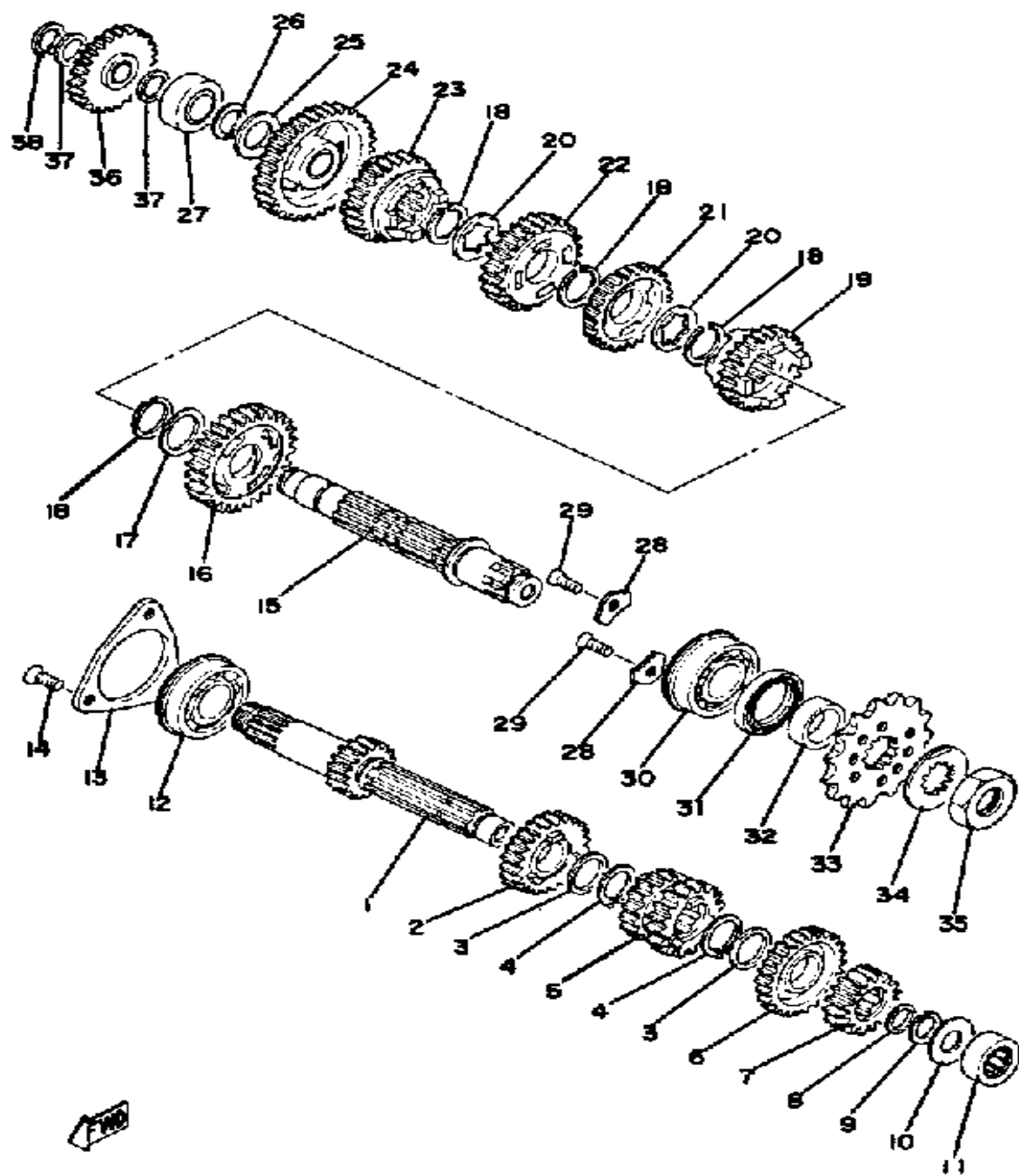
Ref. No.	Part Number	Description	Qty	Remarks
9	2X7-11601-40-00	PISTON RINGSET 4TH (4TH O.S.)	1	ALTERNATE PART
10	93310-218A6-00	BEARING	1	
11	214-11633-00-00	PIN, PISTON	1	
12	93450-19052-00	CIRCLIP, INNER	2	
13	93306-20627-00	BEARING (B6206C3)	2	
14	93103-30150-00	OIL SEAL (38W)	1	
15	93103-40091-00	OIL SEAL	1	
16	93210-29282-00	O-RING	1	
17	(2K7-16111-00-00)	GEAR, PRI DRIVE	1	
18	92901-18100-00	WASHER, SPRING	1	
19	90179-18172-00	NUT	1	
20	90280-03017-00	KEY, WOODRUFF	1	
21	90282-07019-00	KEY, STRAIGHT	1	
22	90179-10257-00	NUT, SPECL SHAPE	1	

# CLUTCH



Ref. No.	Part Number	Description	Qty	Remarks
1	2X4-16301-00-00	CLUTCH ASSEMBLY	1	
2	2K7-16150-00-00	. PRI DRVN GEAR	1	
3	2K7-16371-00-00	. BOSS, CLUTCH	1	
4	4H7-16321-01-00	. PLATE, FRICTION	5	
5	168-16324-00-00	. PLATE, CLUTCH 1	4	
6	2K7-16351-00-00	. PLATE, PRESSURE 1	1	
7	90501-24549-00	. SPRING, COMPRESSION	6	
8	90159-06016-00	. SCREW, WITH WASHER	6	
9	(2K7-16356-00-00)	ROD, PUSH 1	1	
10	90170-20195-00	NUT, HEXAGON	1	
11	90215-20125-00	WASHER, LOCK	1	
12	90149-06123-00	SCREW, SPEC'L SHAPE	1	
13	95380-06600-00	NUT, HEXAGON	1	
14	92995-06100-00	WASHER, SPRING	1	
15	2K7-16181-00-00	SPACER 1	1	
16	2K7-16154-00-00	PLATE, THRUST 1	2	
17	93515-32029-00	BALL	1	
18	2K7-16357-01-00	ROD, PUSH 2	1	
19	2X4-16380-00-00	PUSH LEVER ASSEMBLY	1	
20	214-17481-00-00	. PLUG, BLIND	1	
21	90508-14373-00	SPRING, TORSION	1	
22	90201-17327-00	WASHER, PLATE	1	
23	93102-17004-00	OIL SEAL, SD-TYPE	1	
24	93315-21721-00	BEARING, CYLINDRICAL	1	
25	90149-08108-00	SCREW, SPEC'L SHAPE	1	
26	90430-08069-00	GASKET	1	

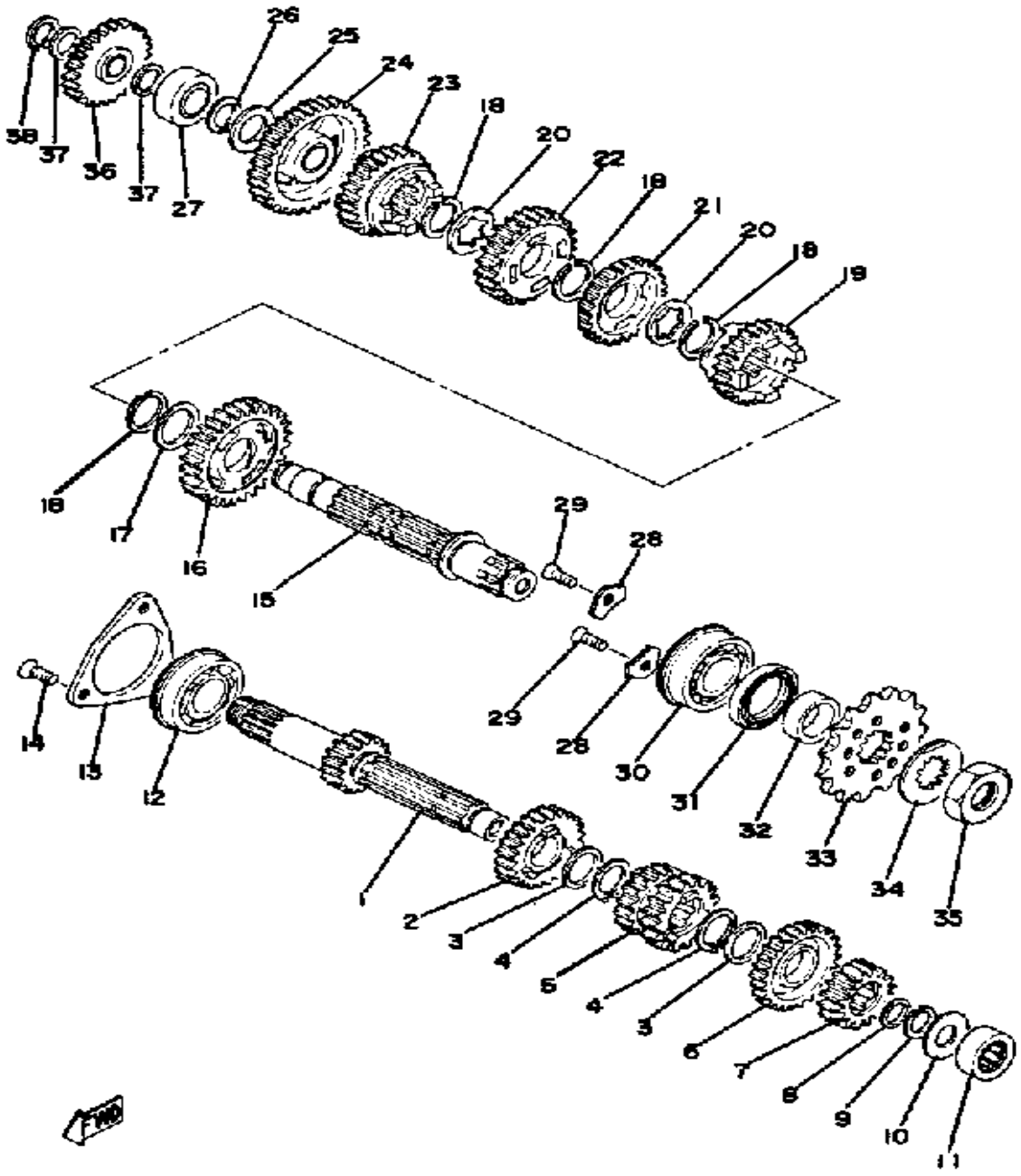
# TRANSMISSION



Ref. No.	Part Number	Description	Qty	Remarks
1	(2X4-17411-00-00)	AXLE, MAIN .....	1	
2	2X4-17151-00-00	GEAR, 5TH PINION .....	1	
3	90201-22555-00	WASHER, PLATE .....	2	
4	93410-22039-00	CIRCLIP .....	2	
5	(2X4-17131-00-00)	GEAR, 3RD PINION .....	1	
6	2X7-17161-00-00	GEAR, 6TH PINION .....	1	
7	2K7-17121-00-00	GEAR, 2ND PINION (16T) .....	1	
8	90201-17682-00	WASHER, PLATE .....	1	
9	93440-17064-00	CIRCLIP .....	1	
10	90201-17257-00	WASHER, PLATE .....	1	
11	93311-41734-00	BEARING, CYLINDER.# 1 .....	1	
12	93306-20535-00	BEARING (93306-20515) .....	1	
13	1W4-15383-00-00	PLATE, BRNG COVER .....	1	
14	98603-06012-00	SCREW, OVAL HEAD (92701-06012) .....	3	
15	2K7-17421-00-00	AXLE, DRIVE .....	1	
16	2K7-17221-01-00	GEAR, 2ND WHEEL (29T) .....	1	
17	90201-253K0-00	WASHER, PLATE (T=1.0) .....	1	
18	93440-25084-00	CIRCLIP .....	4	
19	2X7-17261-00-00	GEAR, 6TH WHEEL .....	1	
20	90209-22082-00	WASHER (0.5T) .....	2	
21	2X4-17241-00-00	GEAR, 4TH WHEEL .....	1	
22	2K7-17231-00-00	GEAR, 3RD WHEEL (26T) .....	1	
23	2X4-17251-00-00	GEAR, 5TH WHEEL .....	1	
24	2X4-17211-01-00	GEAR, 1ST WHEEL (2X4-17211-00) .....	1	
25	90201-20278-00	WASHER, PLATE .....	1	
26	93410-20038-00	CIRCLIP .....	1	
27	93311-62035-00	BEARING, CYLINDRICAL .....	1	

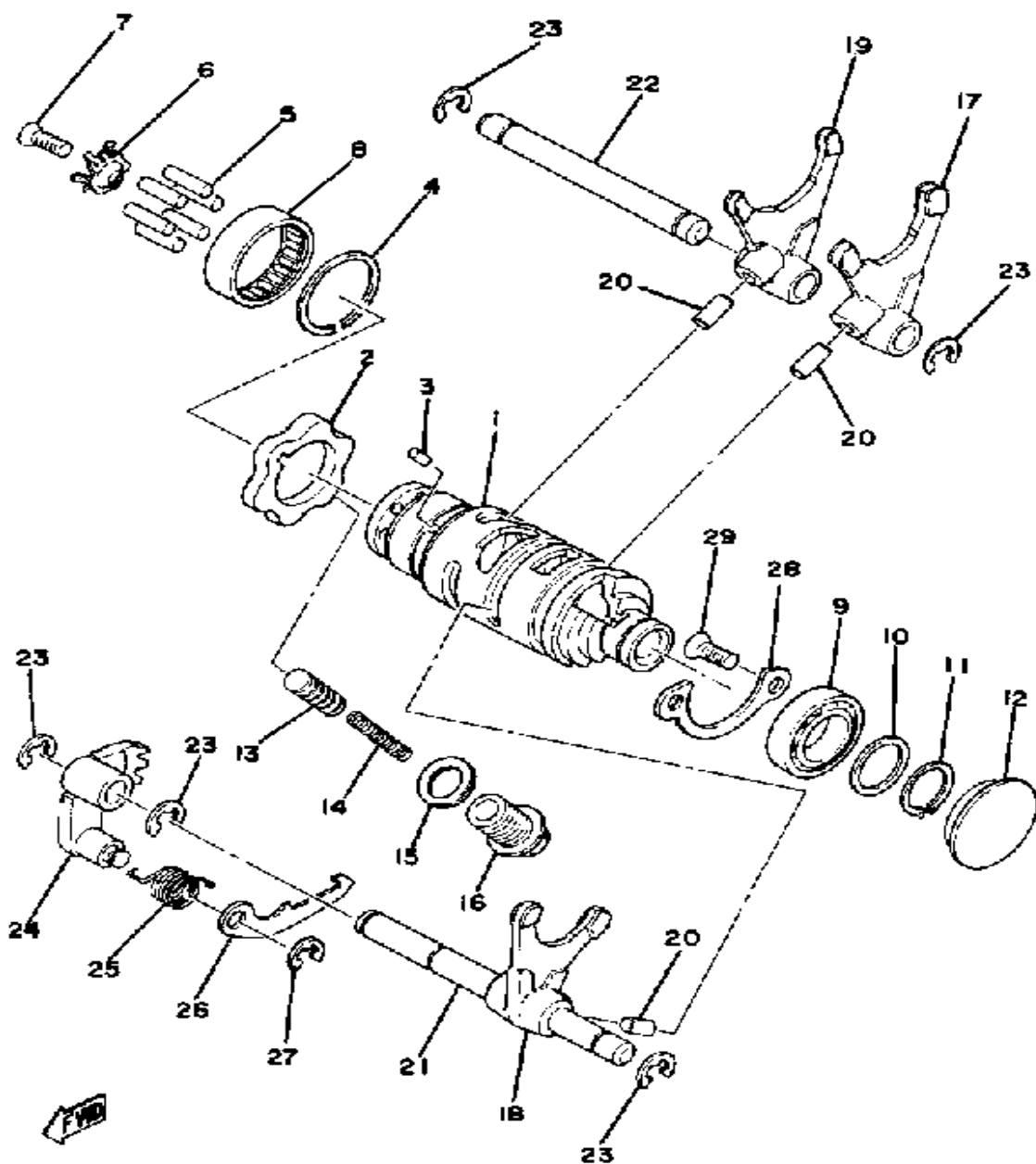
CONTINUED ON NEXT FRAME ►

# TRANSMISSION



Ref. No.	Part Number	Description	Qty	Remarks
28	2K7-15383-00-00	PLATE, BEARING COVER . . . .	2	
29	98603-06012-00	SCREW, OVAL HEAD (92701-06012) . . . . .	2	
30	93304-20501-00	BEARING . . . . .	1	
31	93102-32M07-00	OIL SEAL . . . . .	1	
32	90387-25663-00	COLLAR . . . . .	1	
33	93834-13030-00	SPROCKET, DRIVE 13T . . . . .	1	U.R. STD
	93834-14051-00	SPROCKET, DRIVE . . . . .	1	U.R.
	93834-15078-00	SPROCKET, DRIVE . . . . .	1	U.R.
34	90215-21239-00	WASHER, LOCK . . . . .	1	
35	90179-20255-00	NUT . . . . .	1	
36	3R4-15651-00-00	GEAR, KICK IDLE . . . . .	1	
37	90201-17545-00	WASHER, PLATE . . . . .	2	
38	99009-17400-00	CIRCLIP . . . . .	1	

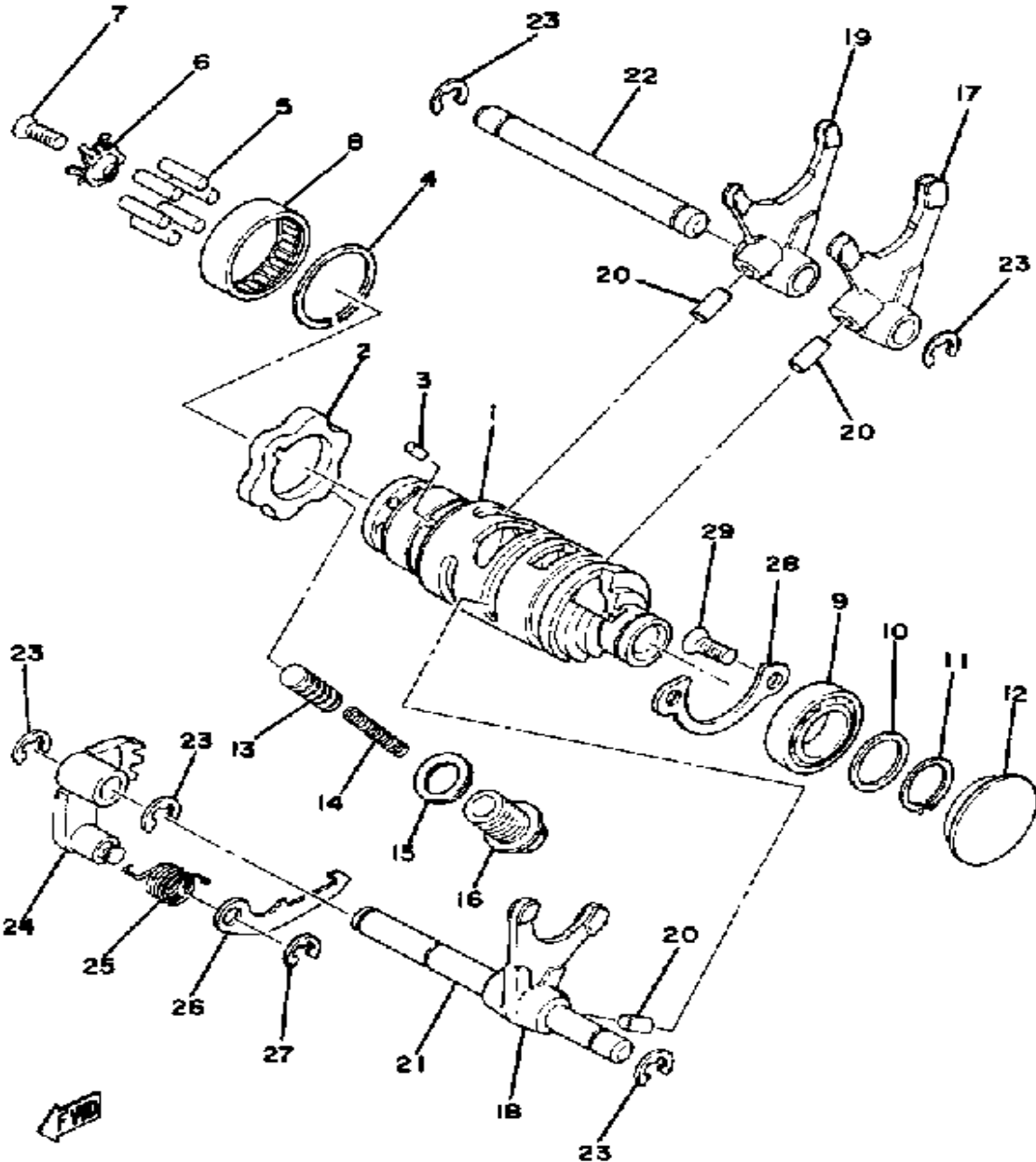
# SHIFTER 1



Ref. No.	Part Number	Description	Qty	Remarks
1	2K7-18540-00-00	SHIFT CAM ASSEMBLY (2K7-18541-00)	1	
2	2K7-18141-00-00	PLATE, STOPPER	1	
3	93604-08071-00	PIN, DOWEL	1	
4	93440-32017-00	CIRCLIP, OUTER (32V SPECIAL)	1	
5	93604-18100-00	PIN, DOWEL	6	
6	2K9-18561-00-00	PLATE, SIDE 1	1	
7	98701-05012-00	SCREW, FLAT HEAD	1	
8	93315-23208-00	BEARING, CYLINDER.# 5	1	
9	93306-90403-00	BEARING	1	
10	90201-20613-00	WASHER, PLATE	1	
11	99009-19400-00	CIRCLIP	1	
12	90338-32086-00	NO LONGER AVAILABLE	1	
13	353-18547-00-00	STOPPER, CAM	1	
14	90501-10062-00	SPRING, COMPRESSION	1	
15	214-11198-01-00	GASKET	1	
16	90109-14485-00	BOLT	1	
17	2K7-18511-00-00	FORK, SHIFT 1	1	
18	2K7-18512-00-00	FORK, SHIFT 2	1	
19	(2K7-18513-00-00)	FORK, SHIFT 3	1	
20	93606-14154-00	PIN, DOWEL	3	
21	(2K7-18531-00-00)	BAR, SHIF FRK GDE 1	1	
22	2K7-18535-01-00	BAR, SHIF FRK GDE 2	1	
23	99001-08600-00	CIRCLIP	5	
24	2K7-18122-01-00	LEVER, SHIFT 2 (2K7-18122-00)	1	
25	(90508-10386-00)	SPRING, TORSION	1	
26	2K7-18151-00-00	LEVER, SHIFT 3	1	
27	99080-07600-00	CIRCLIP	1	

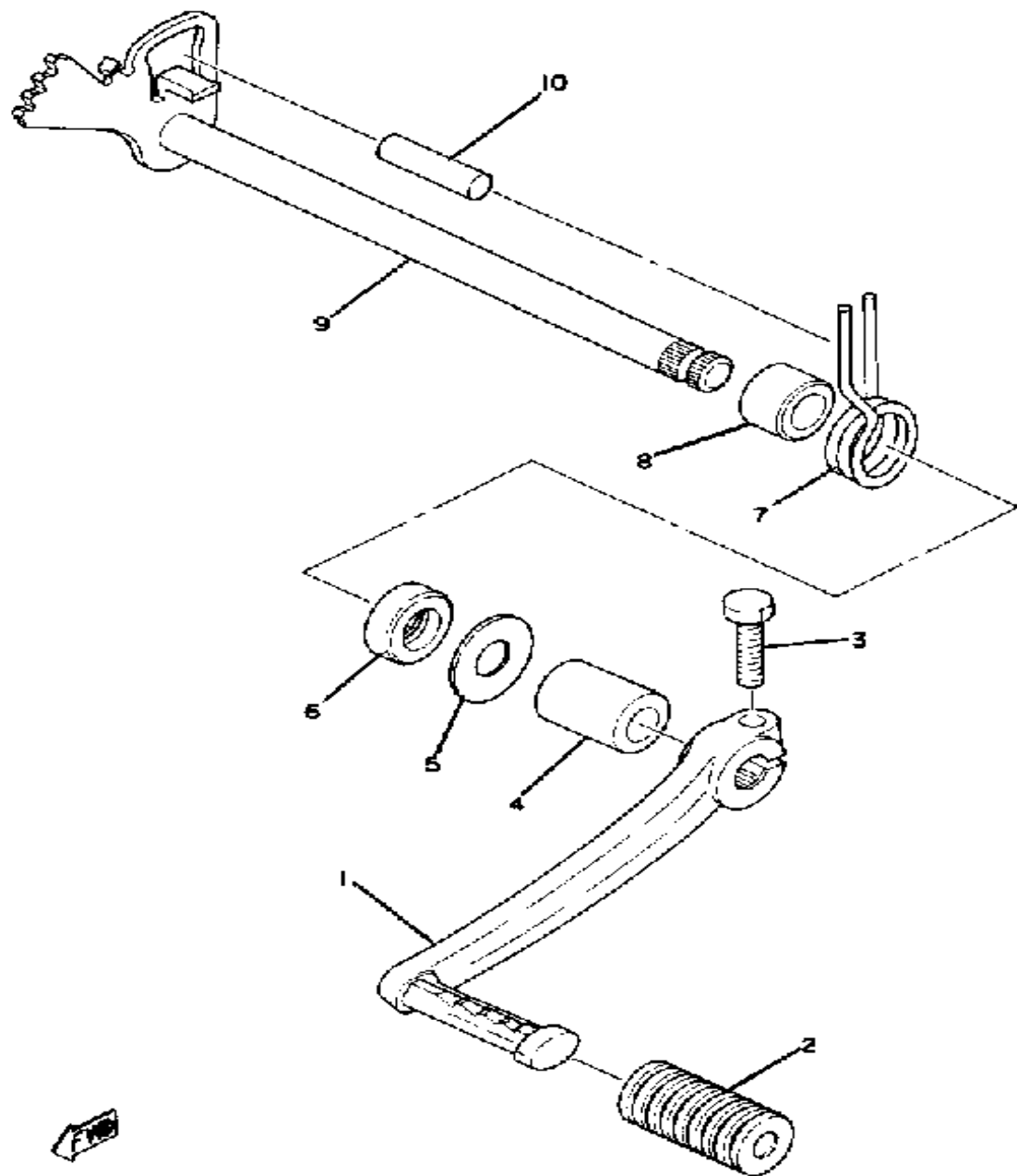
CONTINUED ON NEXT FRAME ►

# SHIFTER 1



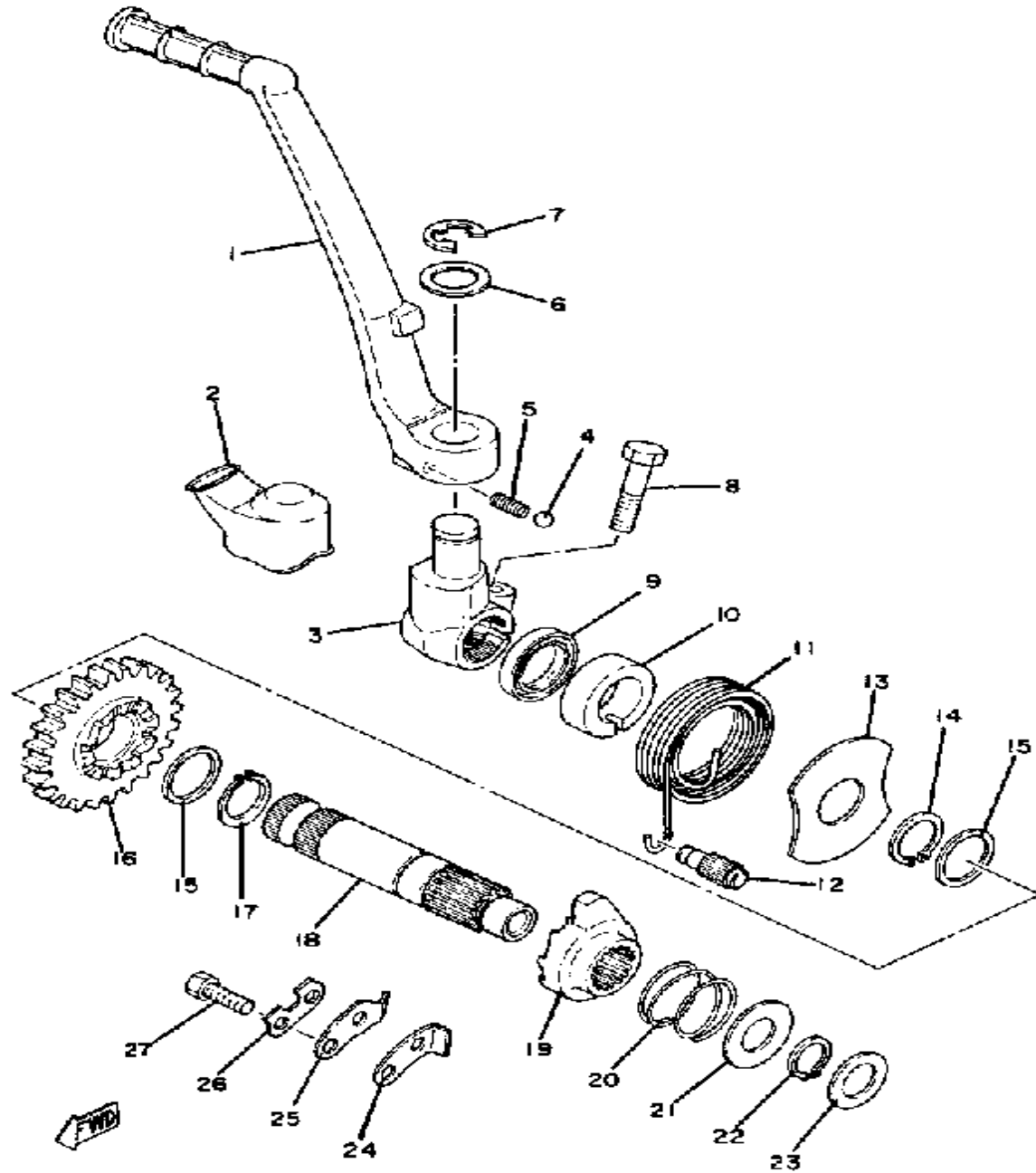
Ref. No.	Part Number	Description	Qty	Remarks
28	(2K7-15381-00-00)	PLATE, BRNG COVER .....	1	
29	98603-06012-00	SCREW, OVAL HEAD (92701-06012) .....	2	

# SHIFTER 2



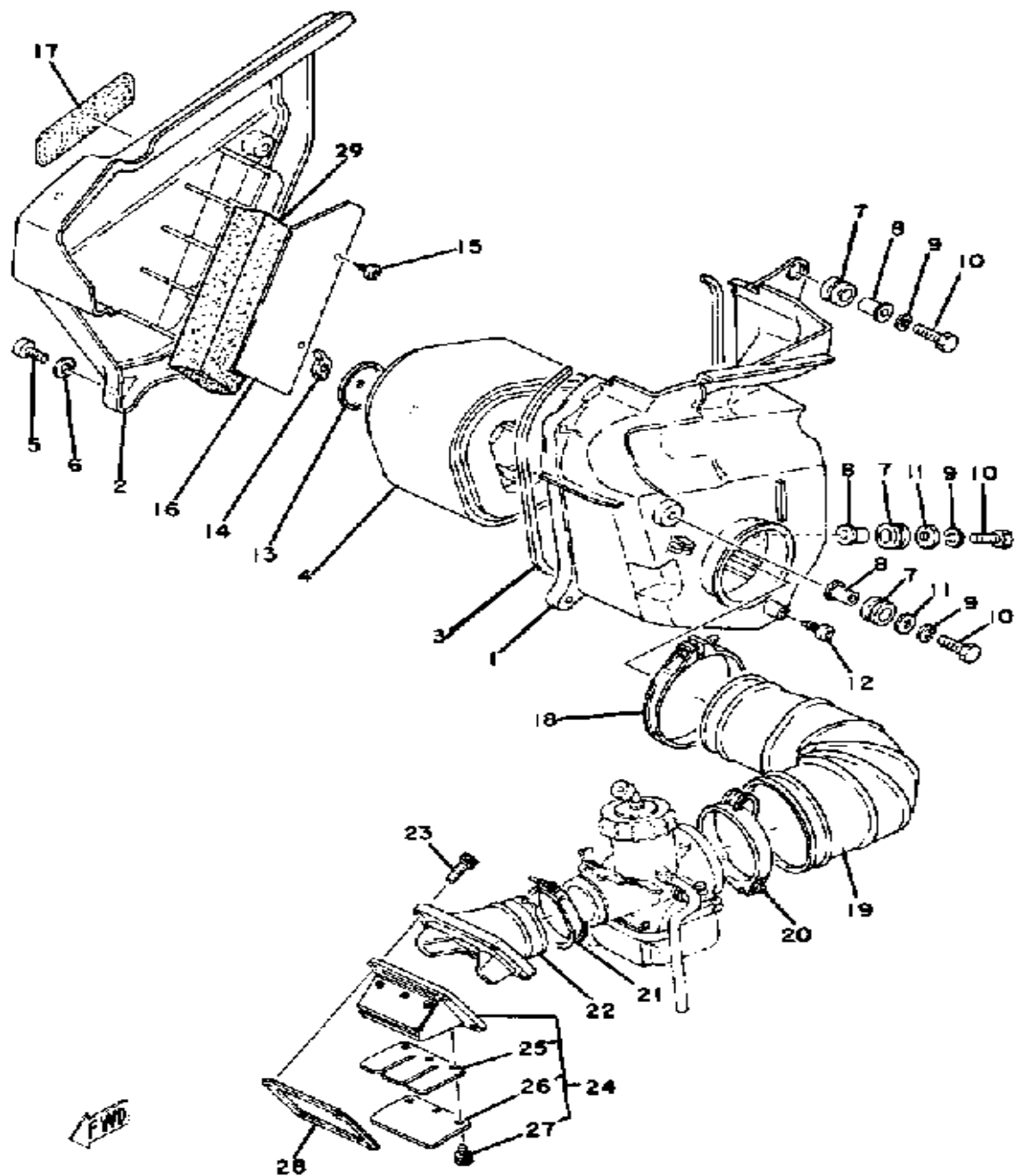
Ref. No.	Part Number	Description	Qty	Remarks
1	2K7-18111-00-00	PEDAL, SHIFT (2K7-18111-00-33)	1	YAMAHA BLACK
2	132-18113-01-00	COVER, SHIFT PEDAL	1	
3	97011-06025-00	BOLT (97001-06025)	1	
4	90560-12191-00	SPACER	1	
5	90201-12588-00	WASHER, PLATE	1	
6	93102-12321-00	OIL SEAL, SD-TYPE	1	
7	90508-32374-00	SPRING, TORSION	1	
8	90560-12171-00	SPACER	1	
9	2K7-18101-00-00	SHIFT SHAFT ASSEMBLY 1	1	
10	93608-30152-00	PIN, DOWEL	1	

# KICK - STARTER



Ref. No.	Part Number	Description	Qty	Remarks
1	2K7-15611-00-00	CRANK, KICK (2K7-15611-00-33)	1	YAMAHA BLACK
2	2K7-15618-00-00	COVER, KICK LEVER	1	
3	2K7-15621-00-00	BOSS, KICK CRANK	1	
4	93507-32031-00	BALL 7/ 2	1	
5	90501-12081-00	SPRING, COMPRESSION	1	
6	90201-15234-00	WASHER, PLATE	1	
7	99006-10600-00	CIRCLIP	1	
8	97313-08030-00	BOLT, HEXAGON	1	
9	93102-20309-00	OIL SEAL	1	
10	3Y6-15664-00-00	GUIDE, SPRING	1	
11	90508-32061-00	SPRING, TORSION (291-15665-00)	1	
12	248-15668-00-00	STOPPER	1	
13	2K7-15676-00-00	COVER, SPRING	1	
14	99009-20400-00	CIRCLIP	1	
15	90201-20685-00	WASHER, PLATE (0.5T)	2	
16	(2K7-15641-01-00)	GEAR, KICK	1	
17	93410-20038-00	CIRCLIP	1	
18	(2K7-15661-01-00)	AXLE, KICK	1	
19	2K7-15671-01-00	WHEEL, RATCHET	1	
20	90501-16107-00	SPRING, COMPRESSION	1	
21	90201-155K6-00	WASHER, PLATE	1	
22	99009-15400-00	CIRCLIP	1	
23	132-15644-00-00	SHIM	1	
24	2NX-15668-00-00	STOPPER	1	
25	2NX-15674-00-00	GUIDE, RATCHET WHEEL	1	
26	214-15686-00-00	WASHER, LOCK	1	
27	97313-06016-00	BOLT	2	

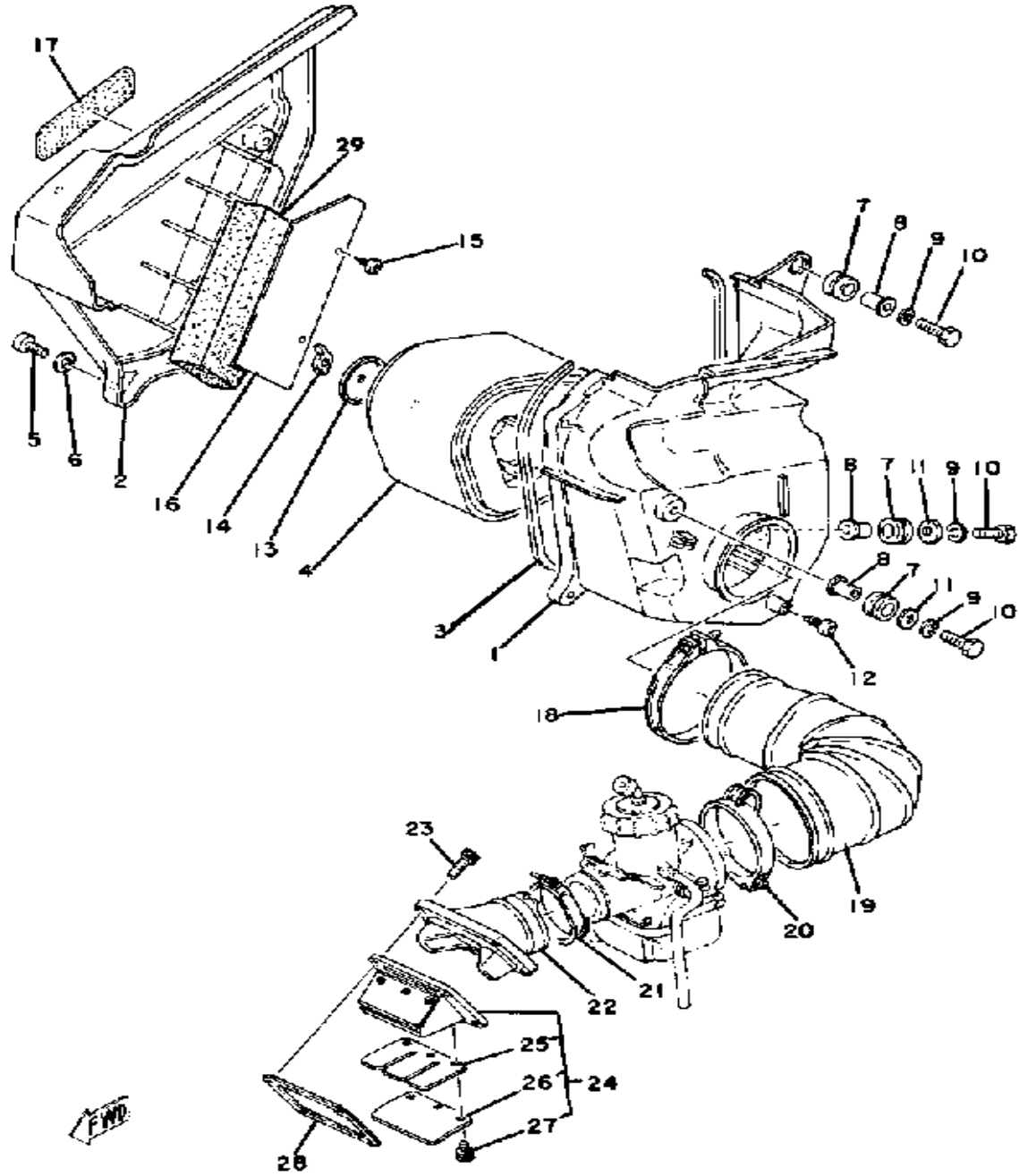
# INTAKE



Ref. No.	Part Number	Description	Qty	Remarks
1	(2X4-14411-00-00)	CASE, AIR CLEANER 1	1	
2	2X4-14412-02-00	CAP, CLEANER CASE 1	1	COMP. YELLOW
3	50M-14462-01-00	SEAL	1	
4	2X4-14450-00-00	ELEMENT ASSEMBLY	1	
5	98503-06014-00	SCREW, PAN HEAD (92501-06015)	4	
6	92901-06600-00	WASHER	4	
7	90480-14023-00	GROMMET	3	
8	90387-07391-00	COLLAR	3	
9	92995-06100-00	WASHER, SPRING	3	
10	97011-06025-00	BOLT (97001-06025)	3	
11	90201-06067-00	WASHER, PLATE	2	
12	(90163-06001-00)	SCREW, TAPPING	3	
13	2X4-14468-00-00	PLATE, ELEMENT FTNG	1	
14	90175-06008-00	NUT, WING	1	
15	97780-40112-00	SCREW, TAPPING	2	
16	(2X4-14477-10-00)	PLATE	1	
17	(2X4-21737-00-00)	EMBLEM	1	
18	90460-85277-00	CLAMP, HOSE	1	
19	2K7-14453-00-00	JOINT, AIR CLNR 1	1	
20	90460-68231-00	CLAMP, HOSE	1	
21	90460-51109-00	CLAMP, HOSE	1	
22	2K7-13565-00-00	JOINT, CARBURETOR	1	
23	91316-06020-00	BOLT	4	
24	2X5-13610-00-00	REED VALVE ASSEMBLY	1	
25	2K7-13613-00-00	. REED, VALVE	2	
26	2X5-13616-00-00	. STOPPER, REED VALVE	2	
27	97601-03108-00	. SCREW, PN/HD.W/WSHR	6	
28	80L-13621-01-00	GASKET, VALVE SEAT	1	

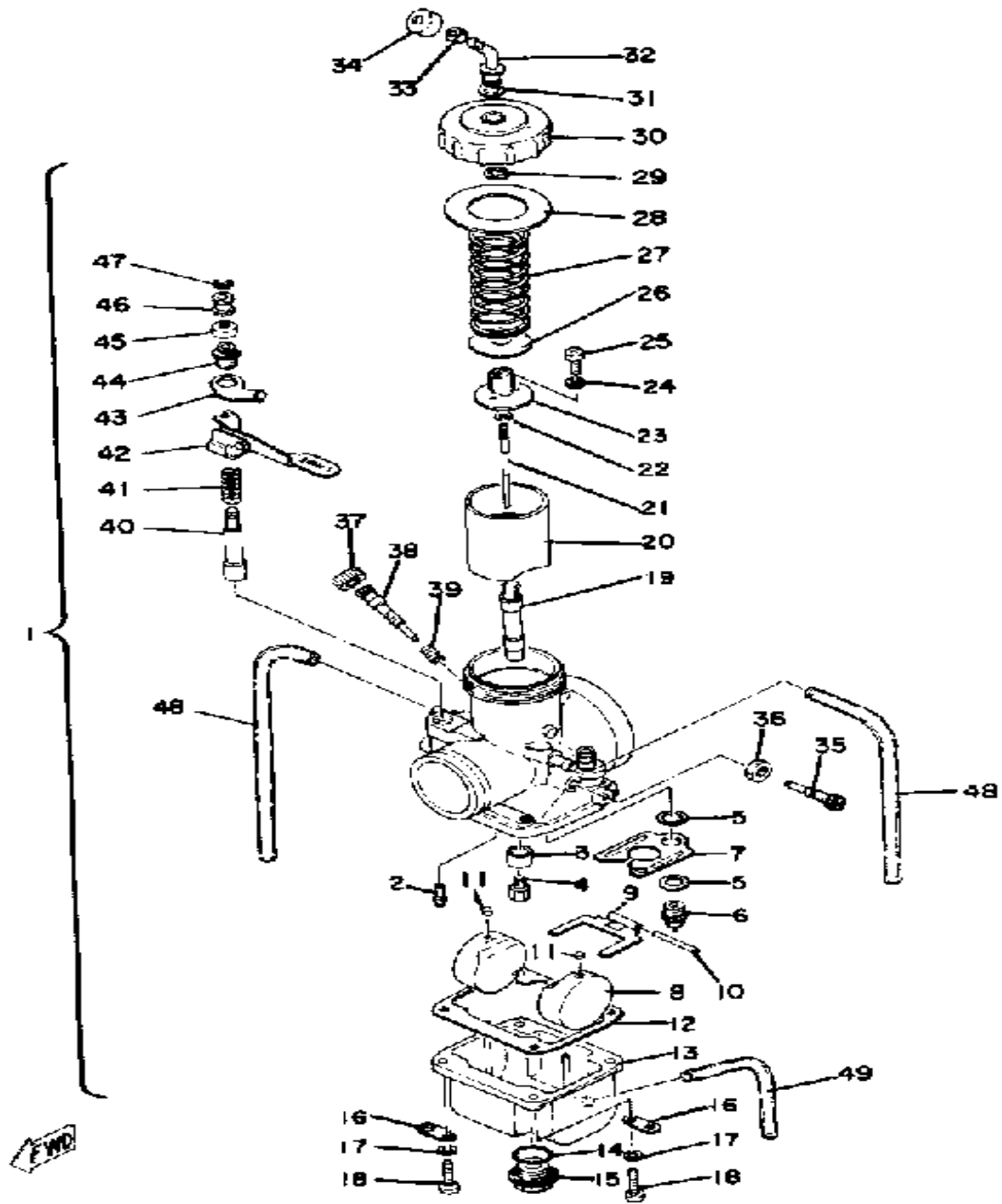
CONTINUED ON NEXT FRAME ►

# INTAKE



Ref. No.	Part Number	Description	Qty	Remarks
29	(2X4-14461-00-00)	ELEMENT, AIR CLNR 2 . . . . .	4	

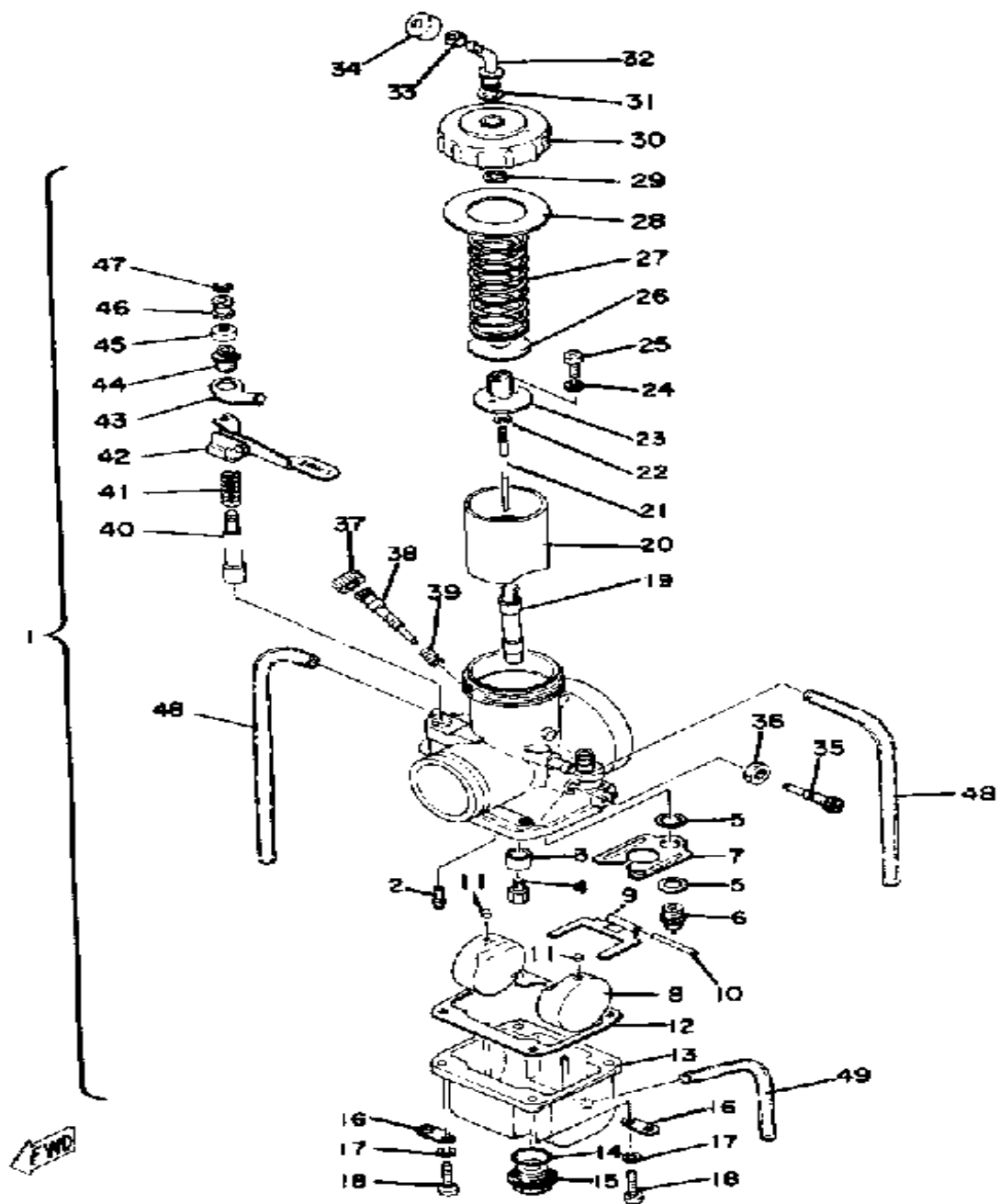
# CARBURETOR



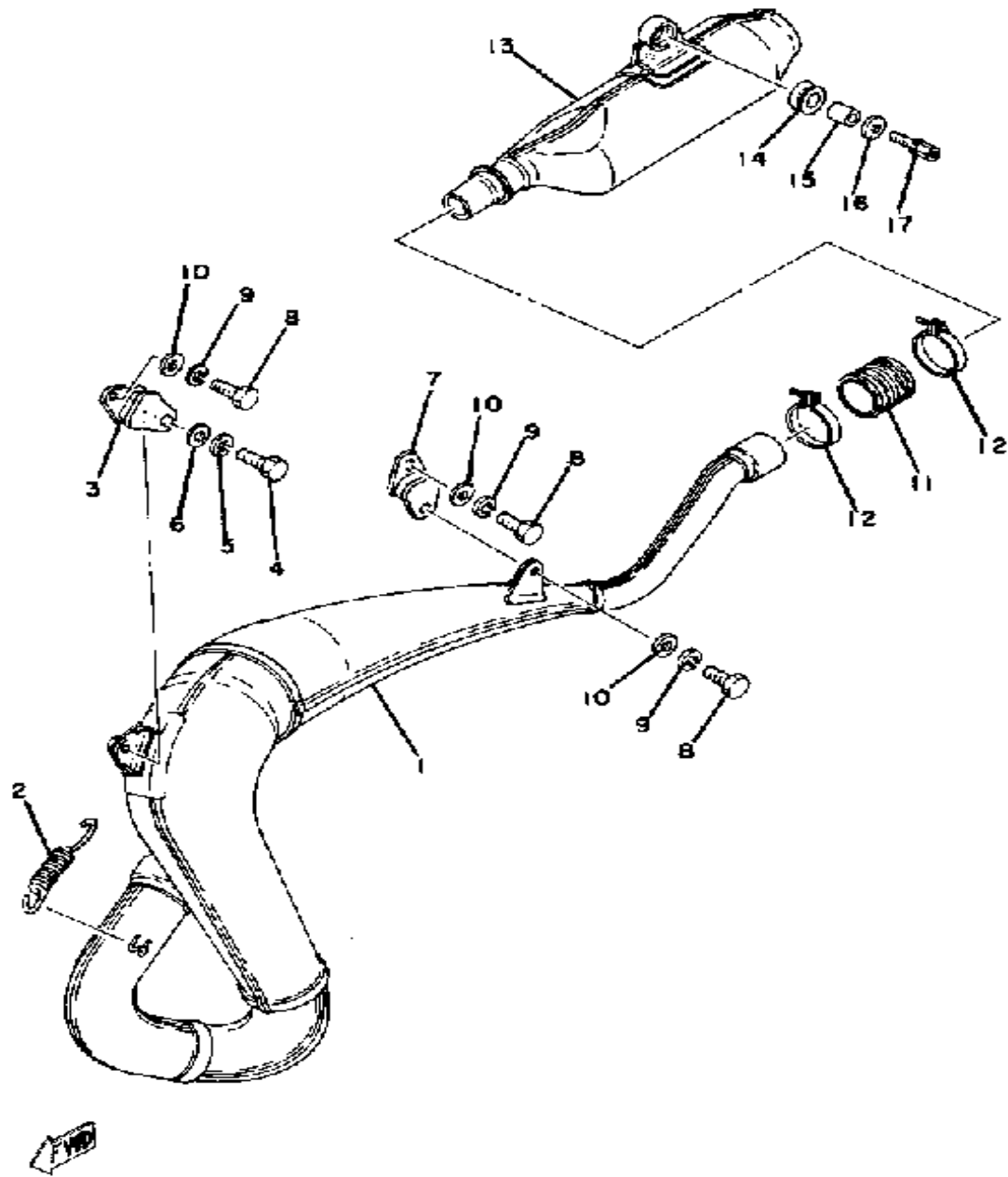
Ref. No.	Part Number	Description	Qty	Remarks
1	(2X4-14101-00-00)	CARBURETOR ASSEMBLY 1	1	
2	193-14142-50-00	. JET, PILOT # 0	1	
3	(1W5-14153-00-00)	WASHER, MAIN JET	1	
4	137-14143-78-00	. JET, MAIN (390)	1	U.R.
	137-14143-80-00	. JET, MAIN (400)	1	U.R. STD
	137-14143-82-00	. JET, MAIN (410)	1	U.R.
5	239-14195-00-00	. WASHER, NEEDLE VLV	2	
6	23X-14107-35-00	. NEEDLE VALVE SET	1	
7	510-14146-00-00	. PLATE	1	
8	214-14185-00-00	. FLOAT	2	
9	363-14187-00-00	. ARM, FLOAT	1	
10	127-14186-00-00	. PIN, FLOAT	1	
11	214-14118-00-00	. CAP	2	
12	363-14184-00-00	. GASKET, FLOAT CHMBR	1	
13	(510-14181-16-00)	BODY, FLOAT CHMBR 1	1	
14	558-14147-00-00	. O-RING	1	
15	500-14115-00-00	. PLUG, SCREW	1	
16	313-14146-00-00	. PLATE	2	
17	92990-05100-00	. WASHER, SPRING	4	
18	98580-05016-00	. SCREW, PAN HEAD	4	
19	510-14141-50-00	. NOZZLE, MAIN (Q-0)	1	
20	510-14112-30-00	. VALVE, THROTTLE 1	1	
21	239-14116-16-00	. NEEDLE	1	
22	164-14137-00-00	. CLIP	1	
23	509-14274-00-00	. CONNECTOR	1	
24	92990-03100-00	. WASHER, SPRING	2	
25	98580-03008-00	. SCREW, PAN HEAD (98501-03008-00)	2	
26	509-14136-00-00	. SEAT, SPRING	1	

CONTINUED ON NEXT FRAME ►

# CARBURETOR



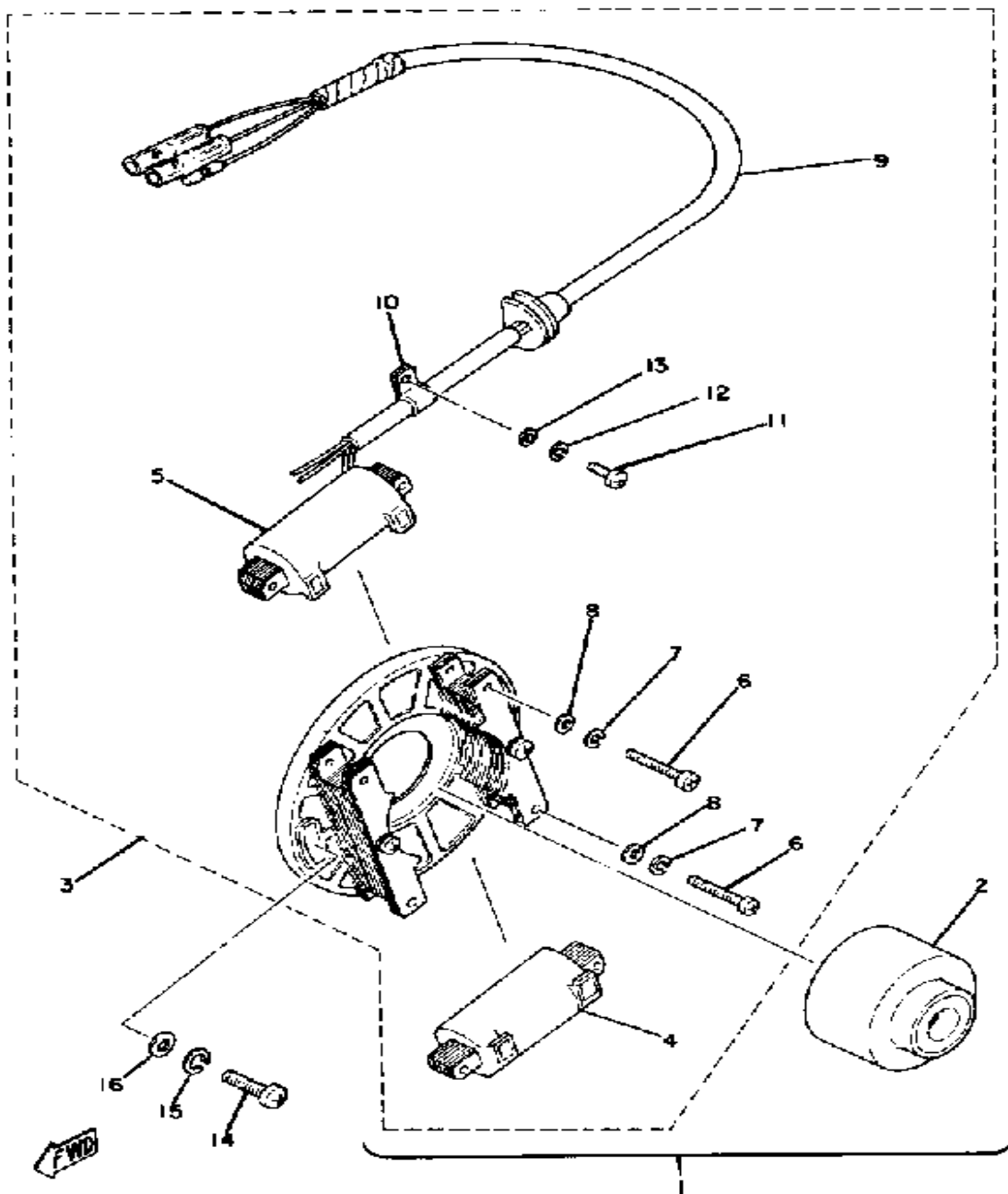
Ref. No.	Part Number	Description	Qty	Remarks
27	363-14131-00-00	. SPRING, THROTTLE VALVE .	1	
28	363-14126-00-00	. GASKET . . . . .	1	
29	363-14137-00-00	. CLIP . . . . .	1	
30	1W3-14158-00-00	. TOP, MIXING CHAMBER . . . .	1	
31	509-14198-00-00	. GASKET . . . . .	1	
32	23X-14106-00-00	. CBLE AJST SCRW SET . . . . .	1	
33	127-14161-00-00	. NUT, CABLE ADJUSTING . . .	1	
34	1M1-14169-00-00	. CAP . . . . .	1	
35	23X-14103-00-00	. THROTTLE SCREW SET . . . .	1	
36	802-14161-00-00	. NUT, CABLE ADJUSTING . . .	1	
37	1W1-14968-00-00	. CAP . . . . .	1	
38	26A-14104-00-00	. AIR SCREW SET (1W3-14123-00) . . . . .	1	
39	137-14133-00-00	. SPRING, THROTTLE STOP . .	1	
40	1W1-14171-00-00	. PLUNGER, STARTER . . . . .	1	
41	256-14135-00-00	. SPRING, PLUNGER . . . . .	1	
42	1W3-14175-00-00	. COVER, PLUNGER CAP (1W3-14173-00-00) . . . . .	1	
43	(1W3-14178-00-00)	PLATE, STARTER LVR . . . . .	1	
44	802-14174-00-00	. CAP, PLUNGER . . . . .	1	
45	802-14173-00-00	. COVER, PLUNGER CAP . . . .	1	
46	737-14241-00-00	. BUSH . . . . .	1	
47	737-14137-00-00	. CLIP . . . . .	1	
48	310-14197-00-00	. PIPE . . . . .	2	
49	3Y3-14196-00-00	. PIPE, OVERFLOW . . . . .	1	



# EXHAUST

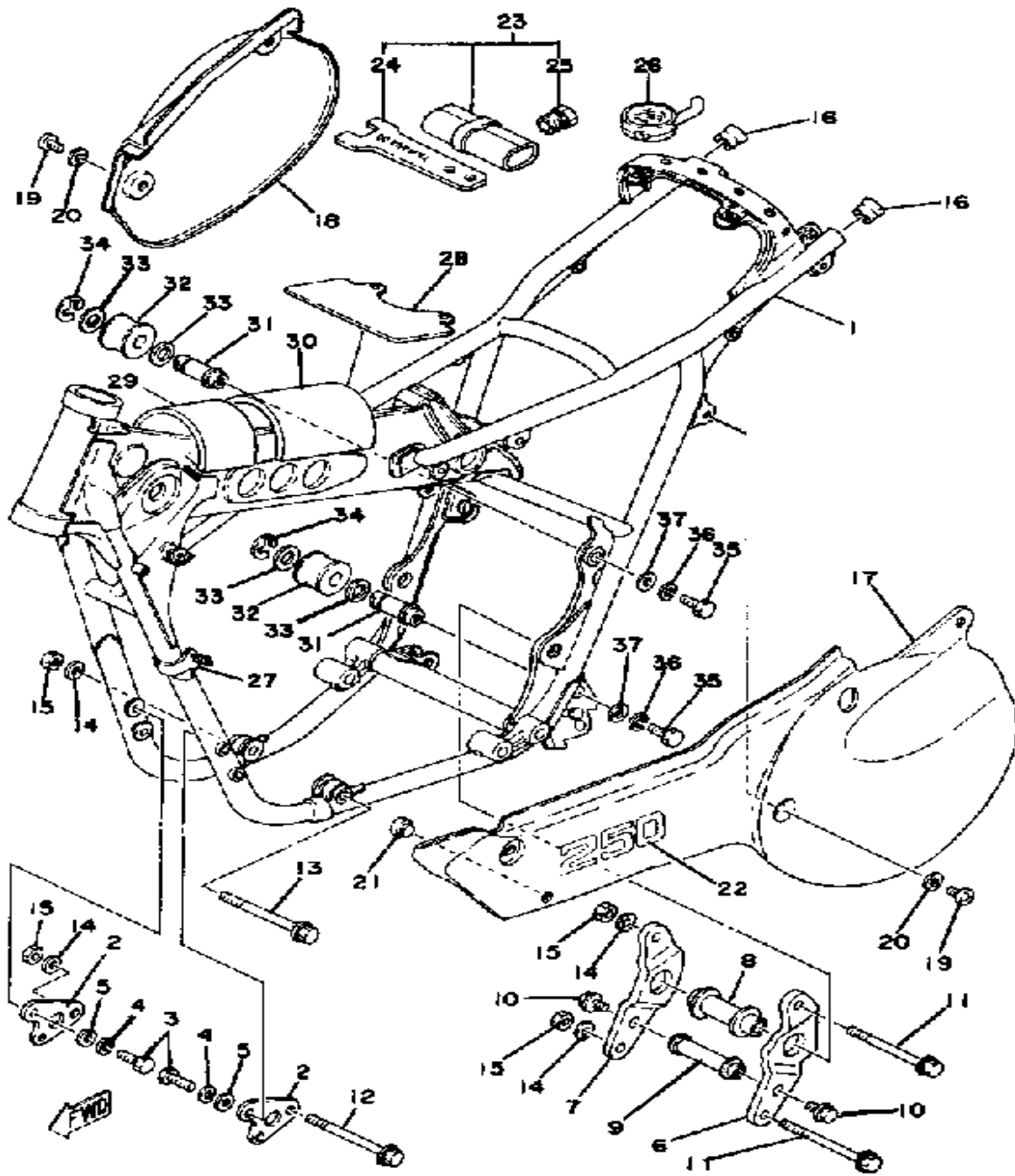
Ref. No.	Part Number	Description	Qty	Remarks
1	2X4-14610-03-00	EXHAUST PIPE ASSEMBLY L .	1	
2	90507-20030-00	SPRING, TENSION . . . . .	2	
3	483-14781-02-00	STAY, MUFFLER 2 . . . . .	1	
4	97313-08020-00	BOLT, HEXAGON . . . . .	1	
5	92990-08100-00	WASHER, SPRING . . . . .	1	
6	92901-08600-00	WASHER, PLATE . . . . .	1	
7	565-14771-00-00	STAY, MUFFLER 1 . . . . .	1	
8	97313-06016-00	BOLT . . . . .	3	
9	92995-06100-00	WASHER, SPRING . . . . .	3	
10	92901-06600-00	WASHER . . . . .	3	
11	1M1-14714-00-00	GASKET, MUFFLER . . . . .	1	
12	90460-43053-00	CLAMP, HOSE . . . . .	2	
13	(2X4-14753-00-00)	SILENCER, EXHAUST . . . . .	1	
14	565-14747-00-00	DAMPER, MUFFLER . . . . .	1	
15	90387-08258-00	COLLAR . . . . .	1	
16	90201-08753-00	WASHER, PLATE . . . . .	1	
17	90109-08512-00	BOLT . . . . .	1	

# C - D - I - MAGNETO



Ref. No.	Part Number	Description	Qty	Remarks
1	(3R4-85500-11-00)	CDI MAGNETO ASSEMBLY . . .	1	
2	3R4-85550-10-00	. ROTOR ASSEMBLY . . . . .	1	
3	3R4-85510-11-00	. STATOR ASSEMBLY . . . . .	1	
4	2X6-85566-10-00	. . COIL, CHARGE 1 . . . . .	1	
5	2X6-85567-10-00	. . COIL, CHARGE 2 . . . . .	1	
6	98501-05030-00	. . SCREW, PAN HEAD . . . . .	6	
7	92990-05100-00	. . WASHER, SPRING . . . . .	6	
8	92901-05600-00	. . WASHER, PLATE . . . . .	6	
9	(2X4-85515-10-00)	LEAD WIRE ASSEMBLY . . . . .	1	
10	109-81328-11-00	. . CLAMP . . . . .	1	
11	98580-04008-00	. . SCREW, PAN HEAD . . . . .	1	
12	92901-04100-00	. . WASHER, SPRING . . . . .	1	
13	92901-04600-00	. . WASHER, PLATE . . . . .	1	
14	98511-06025-00	SCREW PAN HEAD . . . . .	2	
15	92995-06100-00	WASHER, SPRING . . . . .	2	
16	92901-06600-00	WASHER . . . . .	2	

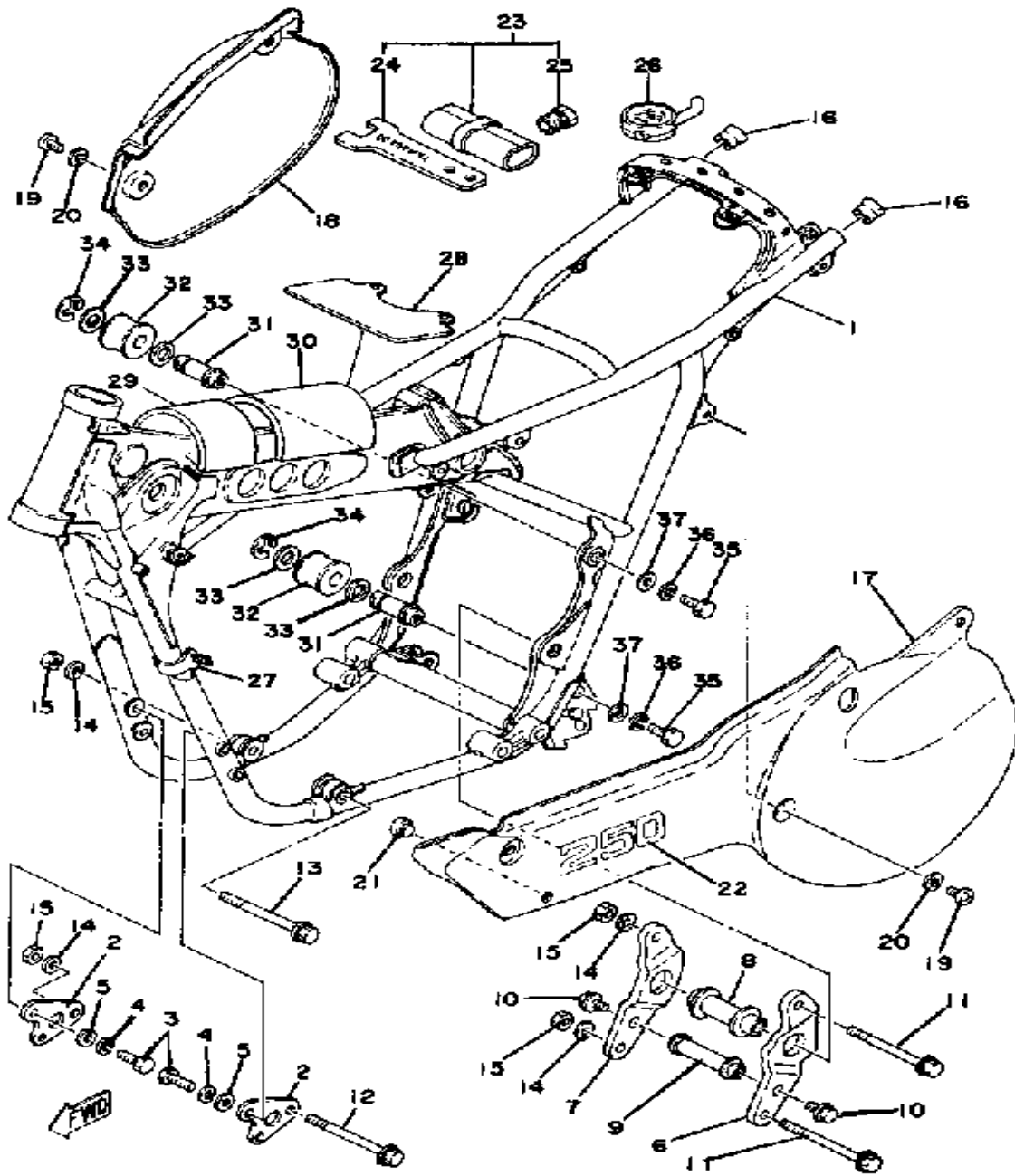
# FRAME - SIDE COVER



Ref. No.	Part Number	Description	Qty	Remarks
1	(2X4-21110-01-33)	FRAME .....	1	YAMAHA BLACK
2	2X4-21415-00-00	BRACKET, FRT UPR 1 (2K7-21415-00) .....	2	
3	97001-08025-00	BOLT (1NV) .....	4	
4	92990-08100-00	WASHER, SPRING .....	4	
5	92901-08600-00	WASHER, PLATE .....	4	
6	2X4-21427-01-00	BRACKET, REAR LWR 1 .....	1	
7	2X4-21428-00-00	BRACKET, REAR LWR 2 .....	1	
8	(2K7-21459-00-00)	SPACER .....	1	
9	(2K7-21424-00-00)	BOSS, ENGINE MOUNT .....	1	
10	95811-08016-00	BOLT, FLANGE .....	2	
11	95811-08090-00	BOLT, FLANGE (95822-08090) .	2	
12	95811-08100-00	BOLT .....	1	
13	95811-08180-00	BOLT, FLANGE .....	1	
14	92990-08200-00	WASHER, PLAIN .....	4	
15	90185-08089-00	NUT, SELF-LOCKING .....	4	
16	90339-13005-00	PLUG .....	2	
17	2X4-21711-00-98	COVER, SIDE 1 .....	1	COMP. YELLOW/LOW GLOSS BLK
18	(2X4-21721-00-98)	COVER, SIDE 2 .....	1	COMP. YELLOW/LOW GLOSS BLK
19	98903-06012-00	SCREW, BIND .....	5	
20	90201-06571-00	WASHER, PLATE .....	5	
21	22W-24181-00-00	DAMPER, LOCATING 1 .....	3	
22	(2X4-21737-00-00)	EMBLEM .....	1	
23	(5X5-28100-00-00)	TOOL KIT .....	1	
24	10V-28135-00-00	. SPANNER, SPECIAL .....	1	
25	(2K7-85555-00-00)	PULLER, ROTOR .....	1	
26	2X4-2811A-01-00	GAUGE, AIR .....	1	
27	437-83936-11-00	BAND, SWITCH CORD .....	1	

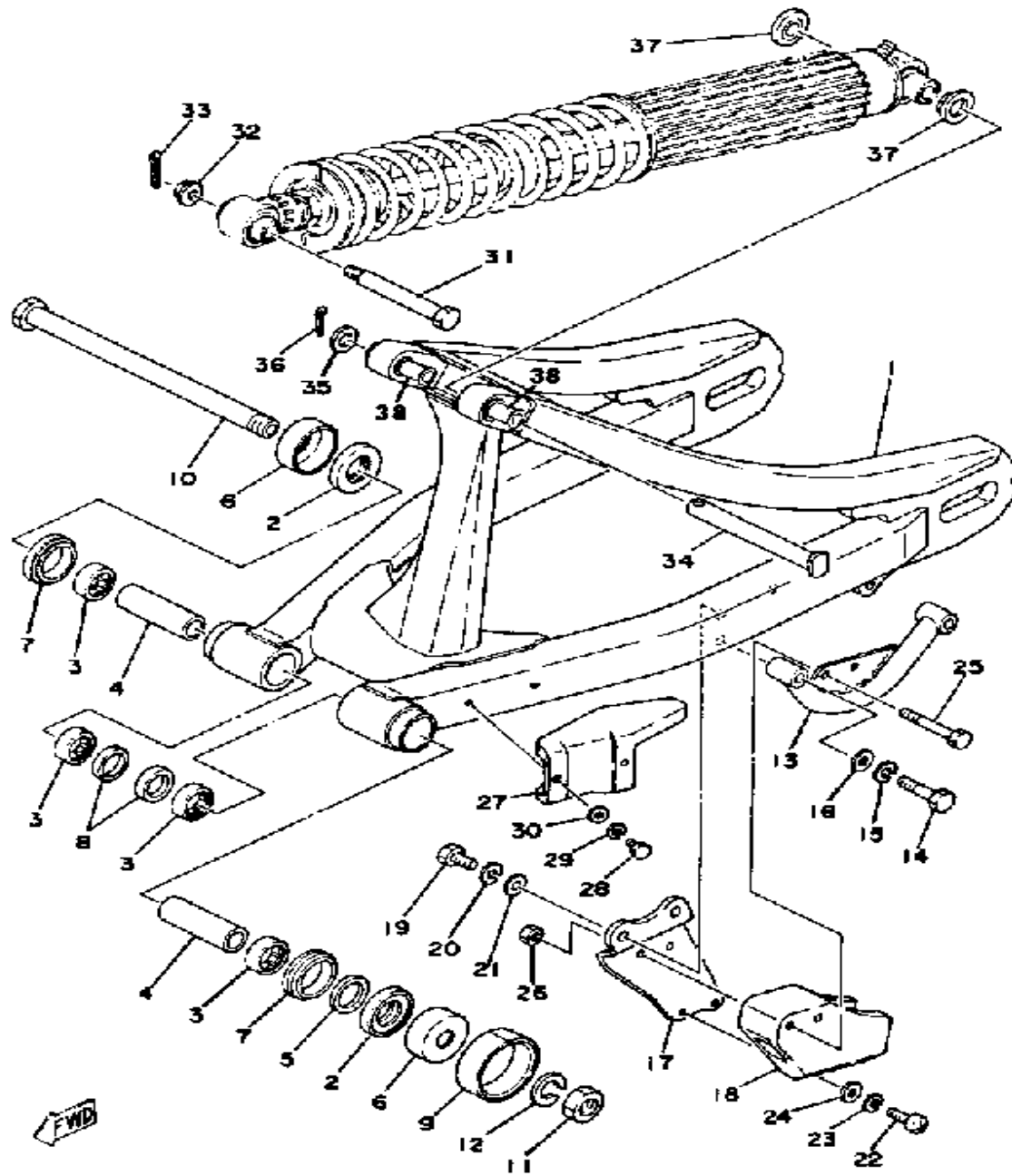
CONTINUED ON NEXT FRAME ►

# FRAME - SIDE COVER



Ref. No.	Part Number	Description	Qty	Remarks
28	(1W1-24181-00-00)	DAMPER, LOCATING 1	1	
29	1W1-24183-00-00	DAMPER, LOCATING 3	1	
30	(2X4-24183-00-00)	DAMPER, LOCATING 3	1	
31	2K6-2148A-02-00	SHAFT	2	
32	2K6-22178-00-00	TENSIONER	2	
33	90201-13202-00	WASHER, PLATE	4	
34	1W1-18136-00-00	CLIP, SHIFT SHAFT	2	
35	97313-08020-00	BOLT, HEXAGON	2	
36	92990-08100-00	WASHER, SPRING	2	
37	92990-08200-00	WASHER, PLAIN	2	

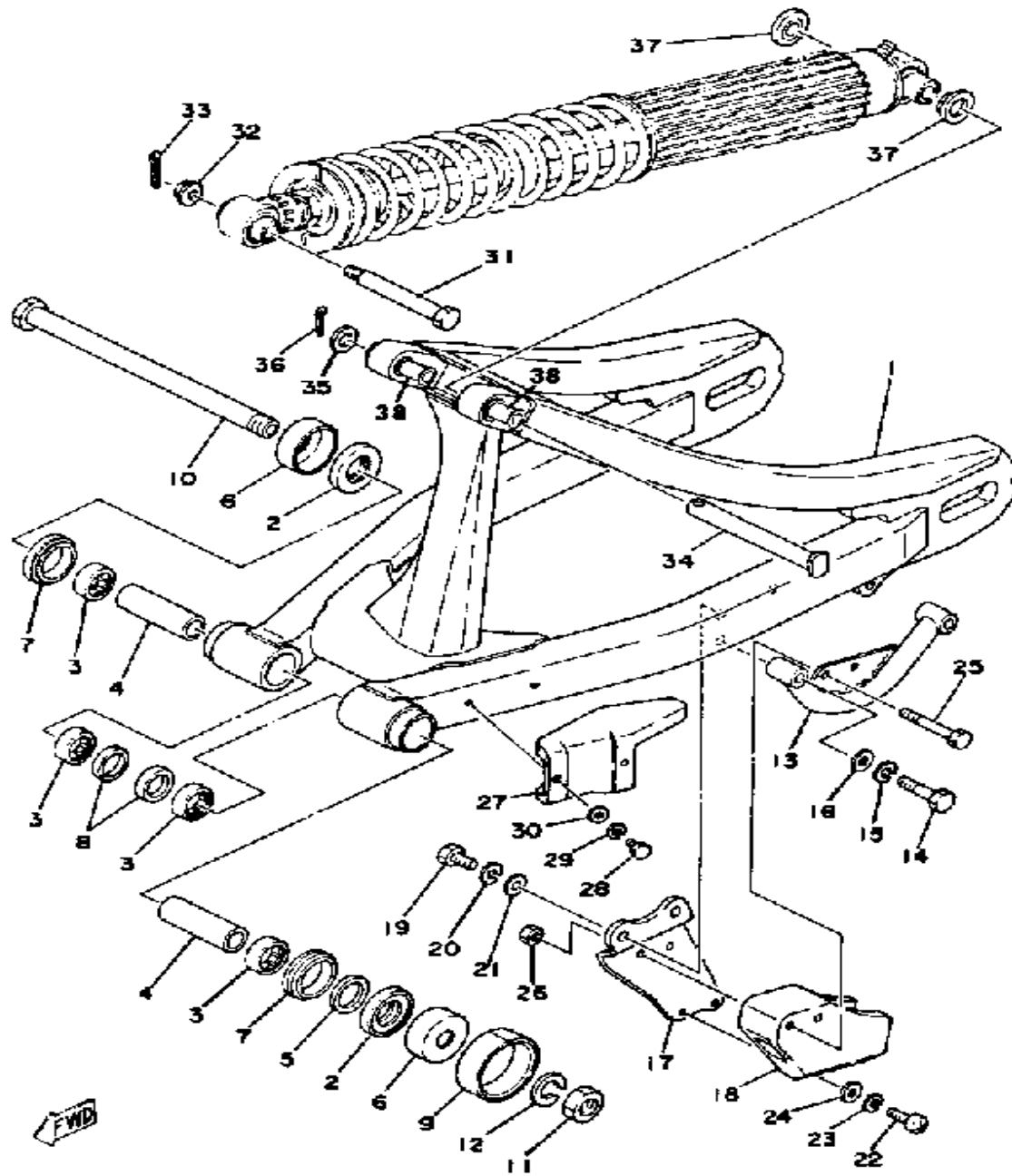
# REAR ARM



Ref. No.	Part Number	Description	Qty	Remarks
1	(2X4-22110-01-35)	REAR ARM .....	1	SILVER
2	93342-22205-00	BEARING, FLAT # 2 .....	2	
3	93317-22214-00	BEARING, CYLINDER.# 7 .....	4	
4	90380-16056-00	BUSH, SOLID .....	2	
5	648-45533-00-03	SHIM .....	1	
6	2X4-22129-00-00	COVER, THRUST 2 .....	2	
7	93108-35004-00	OIL SEAL (35-41-8) .....	2	
8	93109-22018-00	OIL SEAL, SDO-TYPE .....	2	
9	431-22151-03-00	SEAL, GUARD .....	1	
10	1W4-22141-00-00	SHAFT, PIVOT .....	1	
11	90170-16111-00	NUT .....	1	
12	92901-16100-00	WASHER, SPRING .....	1	
13	3R5-22153-00-00	GUARD, CHAIN .....	1	
14	97313-08035-00	BOLT, HEXAGON .....	2	
15	92990-08100-00	WASHER, SPRING .....	2	
16	92901-08600-00	WASHER, PLATE .....	2	
17	2X4-22179-00-00	ARM, TENSIONER .....	1	
18	2X4-22199-00-00	SUPPORT, CHAIN .....	1	
19	97313-08018-00	BOLT, HEXAGON .....	2	
20	92990-08100-00	WASHER, SPRING .....	2	
21	92901-08600-00	WASHER, PLATE .....	2	
22	98580-06020-00	SCREW, PAN HEAD .....	2	
23	92995-06100-00	WASHER, SPRING .....	2	
24	92901-06600-00	WASHER .....	2	
25	97313-06050-00	BOLT .....	2	
26	95601-06100-00	NUT, U .....	2	
27	3R4-22147-00-00	PROTECTOR, CHAIN .....	1	
28	97313-05010-00	BOLT, HEXAGON .....	2	
29	92990-05100-00	WASHER, SPRING .....	2	

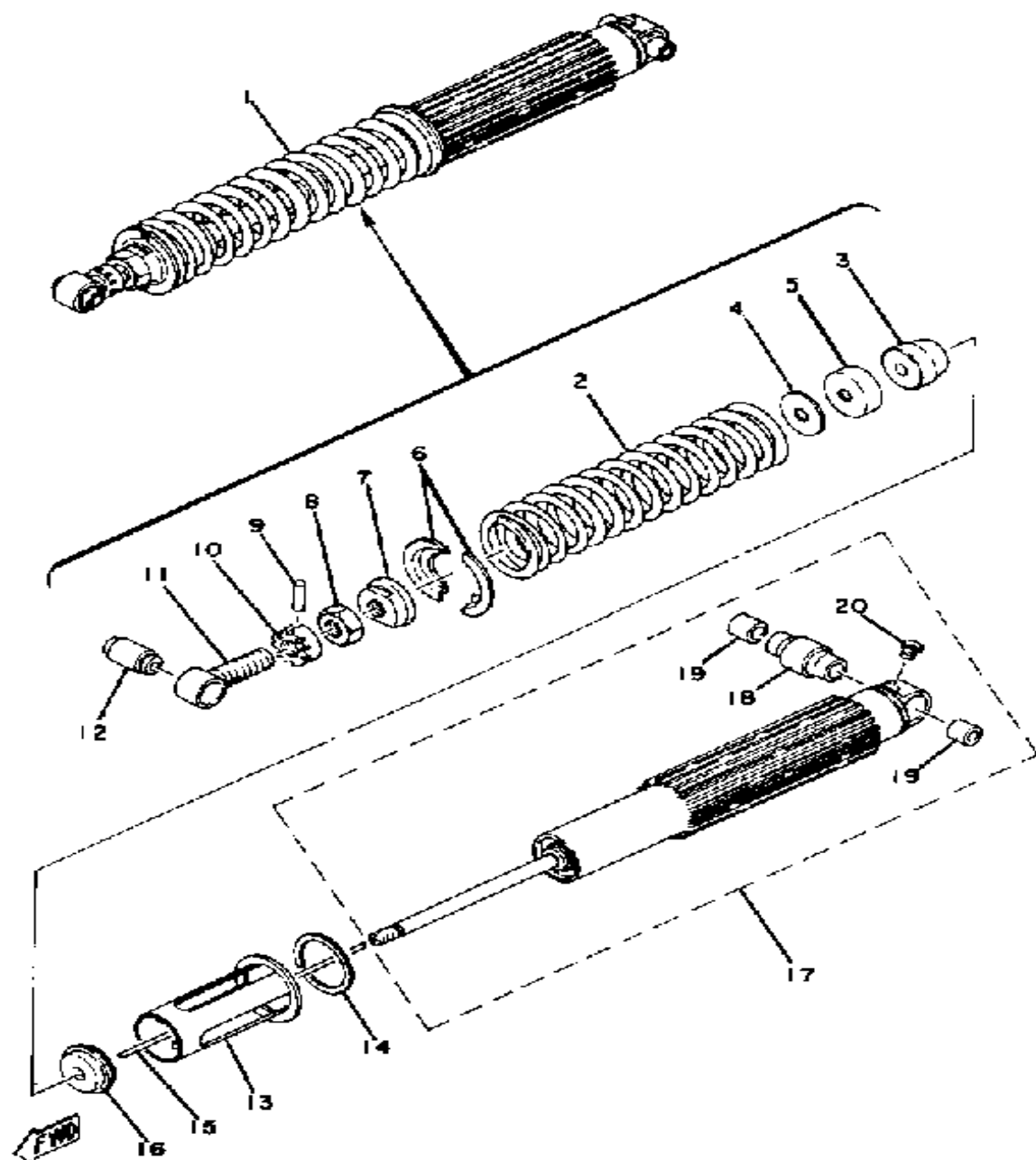
CONTINUED ON NEXT FRAME ►

# REAR ARM



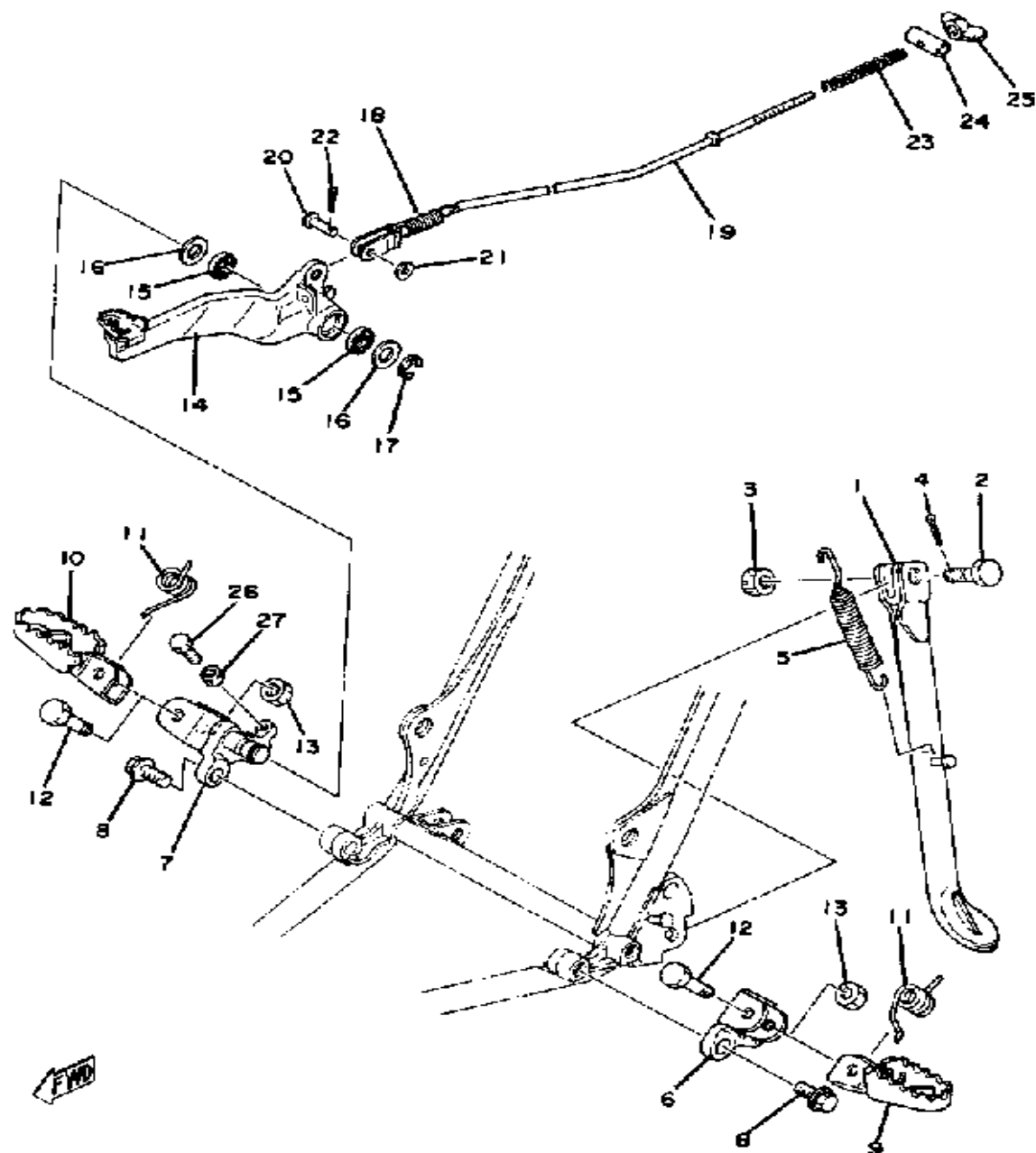
Ref. No.	Part Number	Description	Qty	Remarks
30	92990-05200-00	WASHER, PLAIN	2	
31	90109-08480-00	BOLT	1	
32	90179-08243-00	NUT, SPEC'L SHAPE	1	
33	91490-20020-00	PIN, COTTER (91401-20020-00)	1	
34	90240-12060-00	PIN, CLEVIS	1	
35	92990-12600-00	WASHER, PLATE	1	
36	91401-30030-00	PIN, COTTER	1	
37	1W1-22128-00-00	COVER, THRUST 1	2	
38	(90381-12030-00)	BUSH, SOLID	2	

# REAR CUSHION



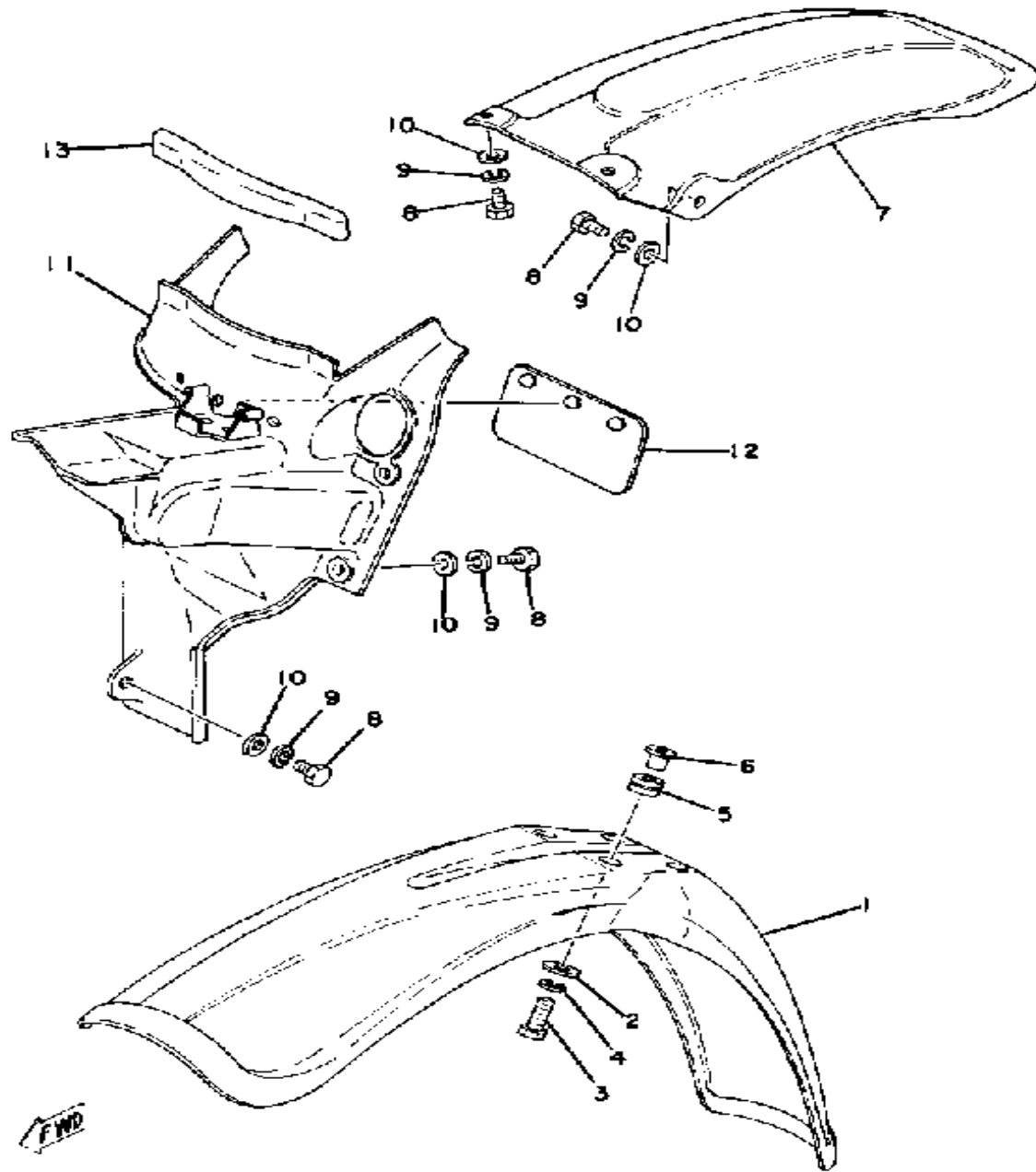
Ref. No.	Part Number	Description	Qty	Remarks
1	(2X4-22210-00-00)	SHK/ABS ASSEMBLY, REAR .	1	
2	(90501-99480-00)	SPRING, COMPRESSION . . . . .	1	HARD(PNTD. RED)
	(90501-99481-00)	SPRING, COMPRESSION . . . . .	1	SOFT(PNTD. YELLOW)
	90501-99479-00	. SPRING, COMPRESSION (K=5.03 KG/MM) . . . . .	1	STD(PNTD. BLUE)
3	(2X4-22493-00-00)	BUMP, STOP . . . . .	1	
4	(2X4-22228-00-00)	SUPPORT, BUMP STOP . . . . .	1	
5	(2X4-22221-00-00)	COVER . . . . .	1	
6	2K6-22214-00-00	. GUIDE, SPRING 1 . . . . .	2	
7	(2K6-22213-00-00)	SEAT, SPRING UPPER . . . . .	1	
8	90170-20320-00	. NUT, HEXAGON . . . . .	1	
9	93604-26132-00	. PIN, DOWEL . . . . .	1	
10	(1W1-22497-00-00)	NUT, ADJUSTING . . . . .	1	
11	(2X4-22219-00-00)	BRACKET, UPPER . . . . .	1	
12	1YW-22216-00-00	. BUSH, REAR SHOCK ABSORBER . . . . .	1	
13	(2X4-22224-00-00)	GUIDE, SPRING 2 . . . . .	1	
14	(2X4-22223-00-00)	SEAT, SPRING LOWER . . . . .	1	
15	(2X4-22489-00-00)	ROD, PUSH . . . . .	1	
16	(2X4-22472-00-00)	CAP, CASE . . . . .	1	
17	(2X4-22401-00-00)	DAMPER SUB-ASSEMBLY. . . . .	1	
18	1W1-22226-00-00	.. BUSH, SHOCK ABS LWR ..	1	
19	90380-12051-00	.. BUSH, SOLID . . . . .	2	
20	98511-04006-00	.. SCREW, PAN HEAD . . . . .	1	

# STAND - FOOTREST BRAKE-PEDAL

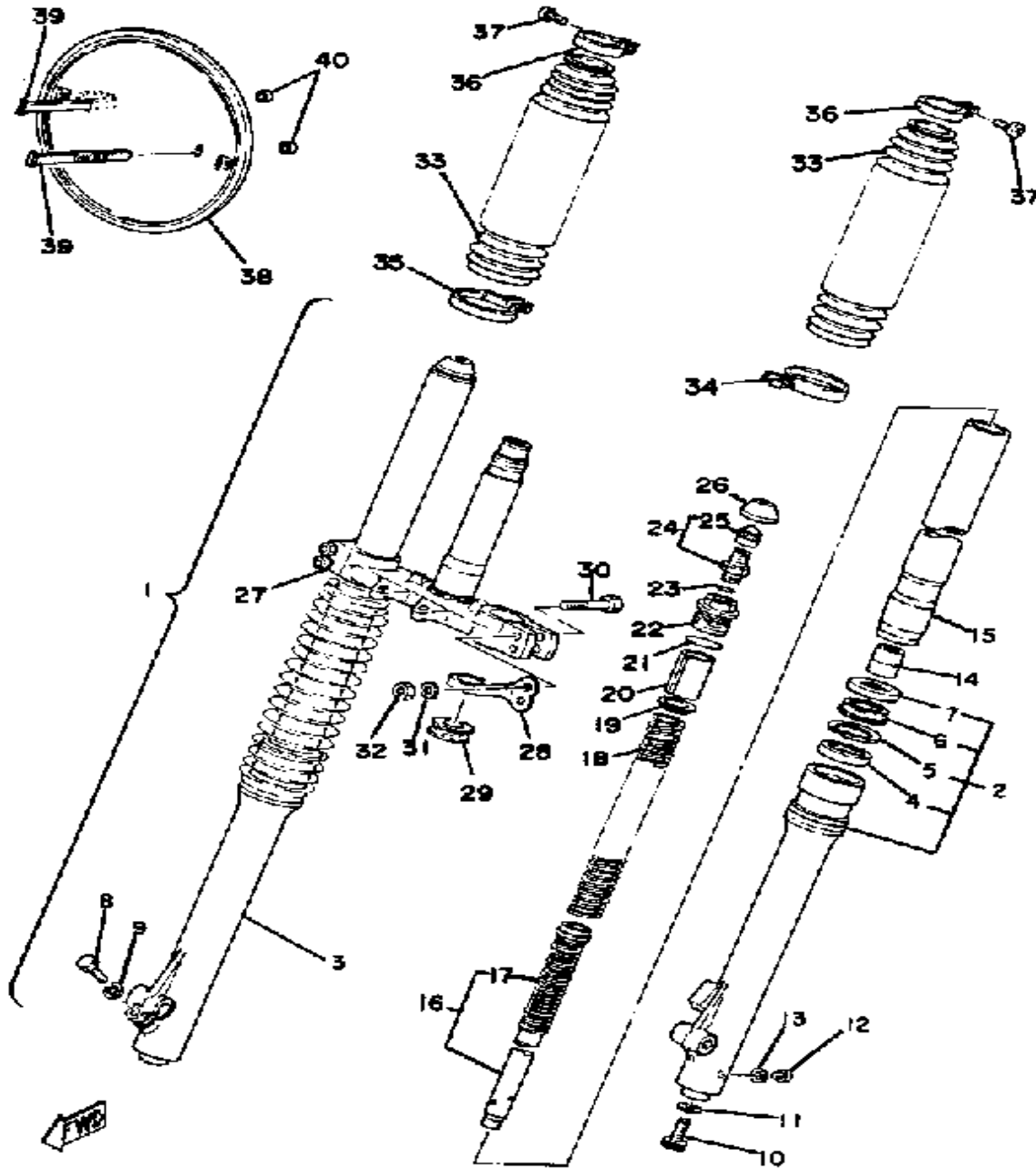


Ref. No.	Part Number	Description	Qty	Remarks
1	(2K7-27311-00-00)	STAND, SIDE .....	1	
2	90102-10006-00	BOLT, WITH HOLE (278-27317-00) .....	1	
3	95303-10900-00	NUT, SLOTTED .....	1	
4	91490-20025-00	PIN, COTTER (91490-20020-00) .....	1	
5	90507-29008-00	SPRING, TENSION .....	1	
6	2X4-27412-00-00	BRACKET, FOOTREST 1 .....	1	
7	2X4-27422-00-00	BRACKET, FOOTREST 2 .....	1	
8	90105-12096-00	BOLT, WASHER BASED .....	4	
9	3R4-27411-00-00	FOOTREST 1 .....	1	
10	3R4-27421-00-00	FOOTREST 2 .....	1	
11	90508-20023-00	SPRING, TORSION .....	2	
12	90101-08428-00	BOLT .....	2	
13	95611-08100-00	NUT, U .....	2	
14	(2X4-27200-01-00)	PEDAL, BRAKE .....	1	YAMAHA BLACK
15	93109-14021-00	OIL SEAL, SDO-TYPE .....	2	
16	90201-14411-00	WASHER, PLATE .....	2	
17	93430-10015-00	CIRCLIP .....	1	
18	90506-20192-00	SPRING, TENSION .....	1	
19	2X4-27231-01-00	ROD, BRAKE .....	1	
20	90240-06103-00	PIN, CLEVIS .....	1	
21	92990-06200-00	WASHER, PLAIN .....	1	
22	91490-20020-00	PIN, COTTER (91401-20020-00) .....	1	
23	90501-10245-00	SPRING, COMPRESSION .....	1	
24	90249-12008-00	PIN .....	1	
25	90179-06411-00	NUT, SPECIAL SHAPE .....	1	
26	97011-06020-00	BOLT .....	1	
27	95380-06700-00	NUT .....	1	

# FRONT FENDER - REAR FENDER



Ref. No.	Part Number	Description	Qty	Remarks
1	5X6-21511-01-00	FENDER, FRONT .....	1	COMP. YELLOW
2	90201-06067-00	WASHER, PLATE .....	4	
3	97011-06025-00	BOLT (97001-06025) .....	4	
4	92995-06100-00	WASHER, SPRING .....	4	
5	90480-14198-00	GROMMET .....	4	
6	90387-07391-00	COLLAR .....	4	
7	2K8-21611-00-00	FENDER, REAR (1W4-21611-00)	1	COMP. YELLOW
8	97301-06014-00	BOLT, HEXAGON .....	7	
9	92995-06100-00	WASHER, SPRING .....	7	
10	90201-06067-00	WASHER, PLATE .....	7	
11	(2X4-21620-00-00)	GUARD, MUD .....	1	
12	1M1-21621-00-00	FLAP .....	1	
13	565-21746-00-00	DAMPER .....	1	

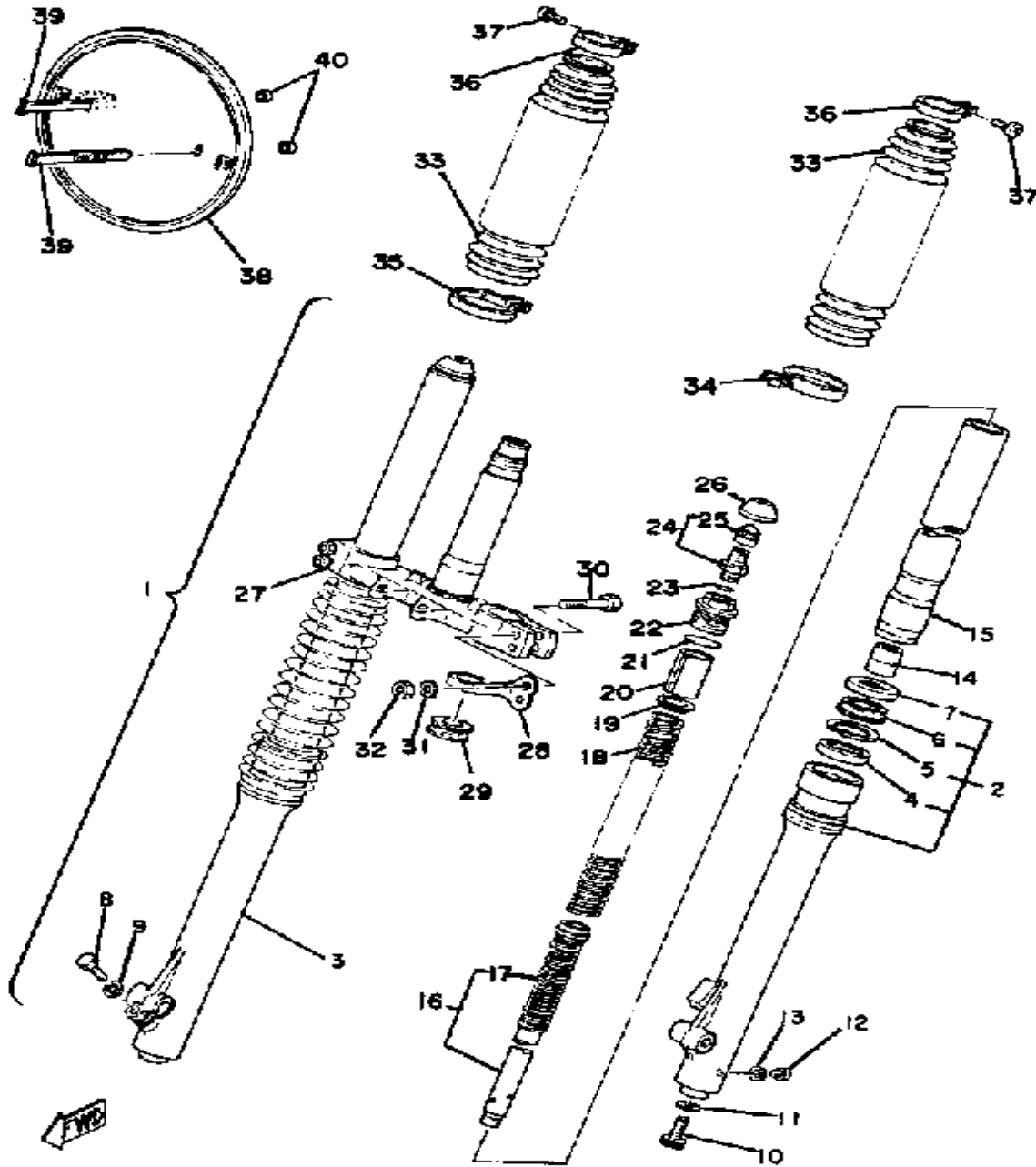


# FRONT FORK

Ref. No.	Part Number	Description	Qty	Remarks
1	(2X4-23101-L0-00)	FRONT FORK ASSEMBLY . . . .	1	
2	(2K8-23126-L0-00)	TUBE, OUTER 1 . . . . .	1	
3	(2K8-23136-L0-00)	TUBE, OUTER 2 . . . . .	1	
4	3EN-23145-00-00	. . OIL SEAL . . . . .	2	
5	(1W4-23156-L0-00)	CLIP, OIL SEAL . . . . .	2	
6	1W4-23144-L0-00	. . SEAL, DUST . . . . .	2	
7	1W4-23148-L0-00	. . COVER, DUST SEAL . . . . .	2	
8	(1W4-23128-L0-00)	BOLT, AXLE HOLDER . . . . .	1	
9	92990-08100-00	. WASHER, SPRING . . . . .	5	
10	(2K8-23181-L0-00)	BOLT, HEX SCKT HEAD . . . . .	2	
11	2K8-23158-L0-00	. GASKET . . . . .	2	
12	4H7-23119-00-00	. PLUG, DRAIN . . . . .	2	
	98580-04008-00	. SCREW, PAN HEAD . . . . .	2	
13	122-23129-00-00	. GASKET, DRAIN PLUG . . . . .	2	
14	(3R4-23173-L0-00)	SPINDLE, TAPER . . . . .	2	
15	(2X4-23110-L0-00)	INNER TUBE 1 . . . . .	2	
16	(2X4-23170-L0-00)	CYLINDER, FRTRFK . . . . .	2	
17	(2X4-23152-L0-00)	SPRING, SUB . . . . .	2	
18	(2X4-23141-10-00)	SPRING, FRONT FORK . . . . .	2	SOFT (USE SPCR. 1W4-23118-L0 W
	(2X4-23141-20-00)	SPRING, FRONT FORK . . . . .	2	HARD (USE SPCR. 1W4-23118-L0 W
	(2X4-23141-L0-00)	SPRING, FRONT FORK . . . . .	2	
19	1W4-23142-L0-00	. SEAT, SPRING UPPER . . . . .	2	
20	(1W4-23118-L0-00)	SPACER . . . . .	2	
21	1W4-23114-L0-00	. GASKET . . . . .	2	
22	1W4-23111-L1-00	. BOLT, CAP . . . . .	2	
23	509-23163-L0-00	. O-RING . . . . .	2	
24	509-23190-L0-00	. AIR VALVE . . . . .	2	

CONTINUED ON NEXT FRAME ►

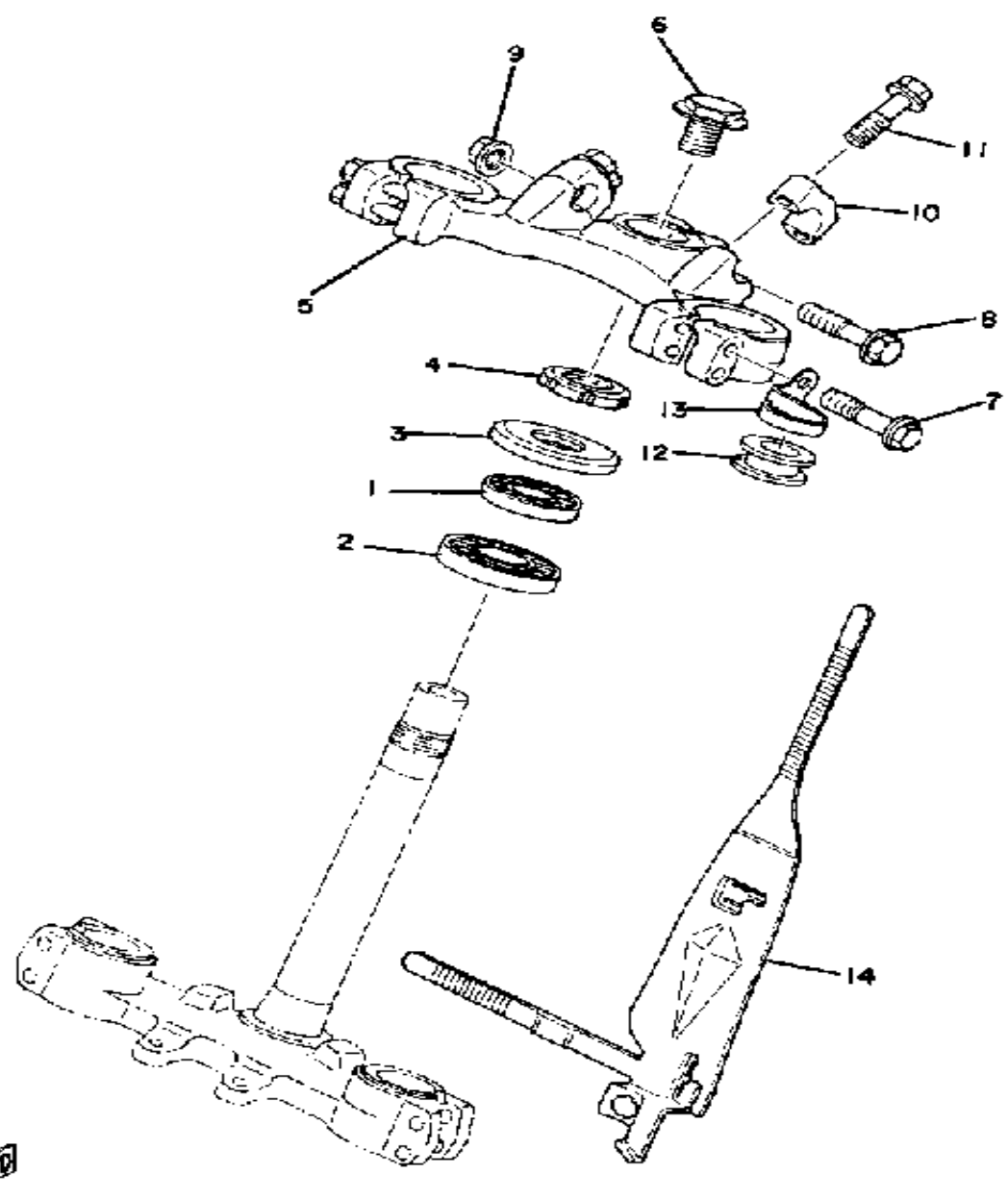
# FRONT FORK



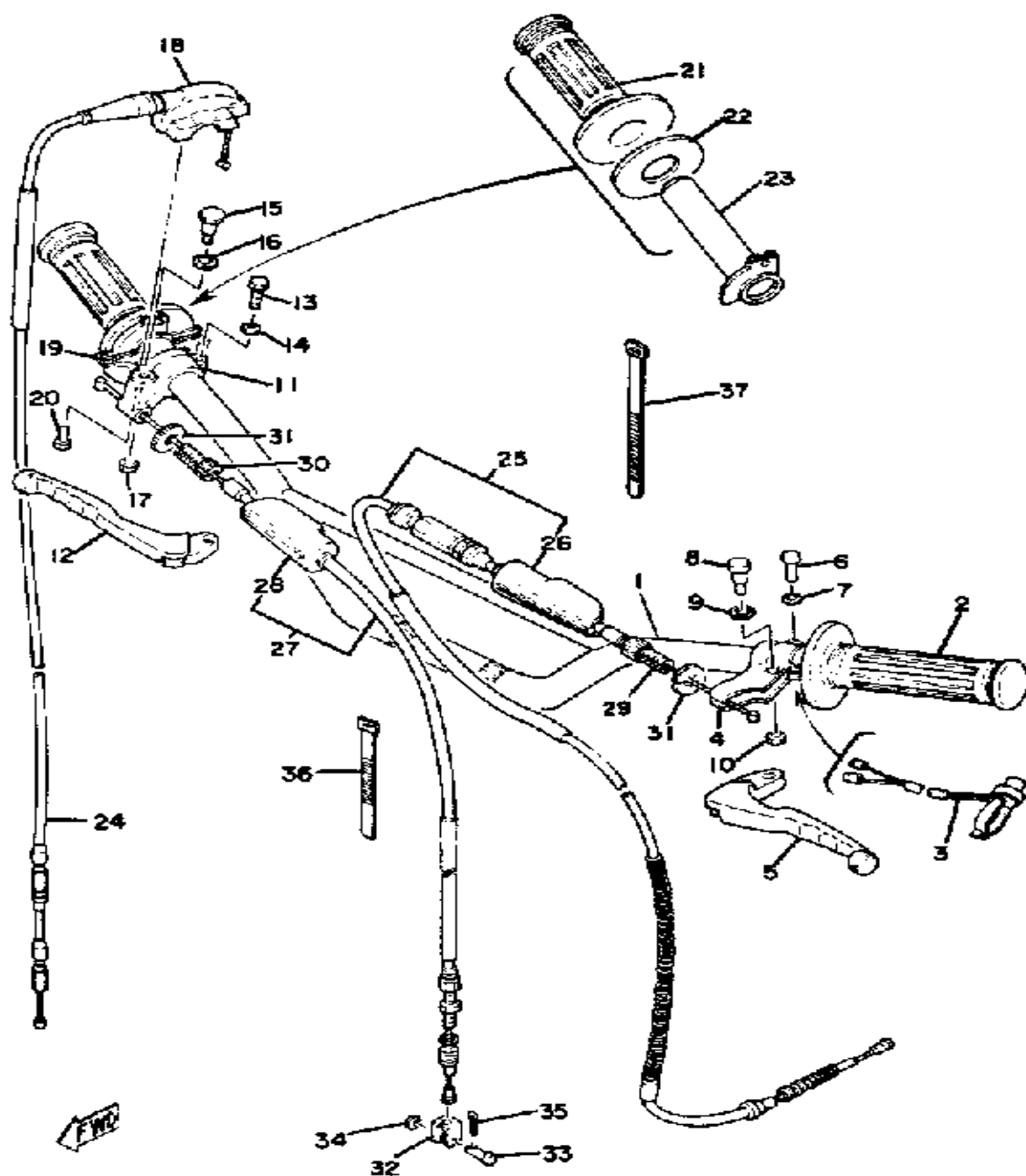
Ref. No.	Part Number	Description	Qty	Remarks
25	509-23184-L0-00	. . CAP, AIR VALVE . . . . .	2	
26	1W1-23185-L0-00	. COVER, VALVE . . . . .	2	
27	(2X4-23340-L0-33)	UNDER BRACKET . . . . .	1	YAMAHA BLACK
28	1W1-23317-01-00	. HOLDER, CABLE . . . . .	1	
29	1W1-23389-00-00	. GUIDE, CABLE . . . . .	1	
30	90101-08340-00	. BOLT . . . . .	4	
31	92901-08600-00	. WASHER, PLATE . . . . .	4	
32	95333-08600-00	. NUT . . . . .	4	
33	2X4-23191-L0-00	BOOT, FRONT FORK . . . . .	2	YELLOW
34	(2K8-23101-L0-00)	FRONT FORK ASSEMBLY . . . . .	1	
35	1W4-23489-L0-00	BAND . . . . .	1	
36	341-92090-60-00	BAND, BOOT . . . . .	2	
37	509-23194-L0-00	SCREW, BOOT BAND . . . . .	2	
38	3R0-23485-00-00	PLATE, NUMBER . . . . .	1	
39	2X4-23489-00-00	BAND . . . . .	2	
40	(90446-09158-00)	HOSE . . . . .	2	

# STEERING

Ref. No.	Part Number	Description	Qty	Remarks
1	93332-00001-00	BEARING .....	1	
2	93332-00008-00	BEARING .....	1	
3	3HE-23416-00-00	COVER, BALL RACE 2 .....	1	
4	90179-25033-00	NUT .....	1	
5	1W4-23435-00-98	CROWN, HANDLE .....	1	LOW GLOSS BLK
6	90105-14136-00	BOLT, WASHER BASED .....	1	
7	90105-08091-00	BOLT, WASHER BASED .....	4	
8	95811-08055-00	BOLT, FLANGE .....	1	
9	95701-08500-00	NUT, FLANGE (95702-08500) ..	1	
10	1E6-23441-00-00	HOLDER, HANDLE UPPER ...	2	LOW GLOSS BLK
11	95811-08035-00	BOLT, FLANGE .....	4	
12	1W1-23389-00-00	GUIDE, CABLE .....	1	
13	1W1-23317-01-00	HOLDER, CABLE .....	1	
14	2X4-23389-00-00	GUIDE, CABLE .....	1	



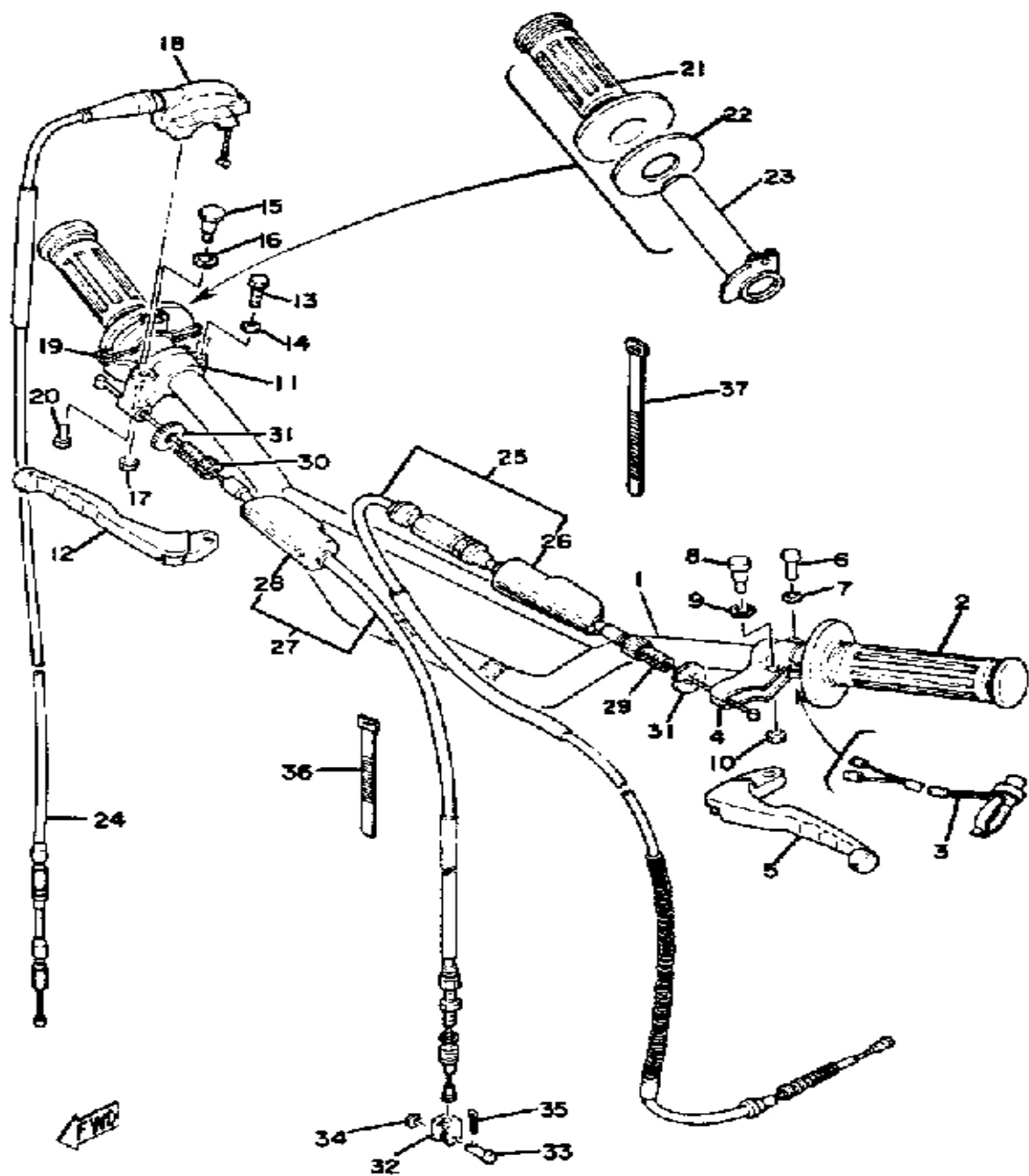
# HANDLE - WIRE



Ref. No.	Part Number	Description	Qty	Remarks
1	2X4-26111-01-00	HANDLEBAR .....	1	
2	1E6-26241-00-00	GRIP LH (L.H.) .....	1	
3	23X-83976-00-00	SWITCH, HANDLE 1 .....	1	
4	214-82911-01-00	HOLDER, LEVER 1 .....	1	
5	23X-83912-00-00	LEVER L .....	1	
6	97003-06022-00	BOLT, HEXAGON .....	1	
7	92995-06100-00	WASHER, SPRING .....	1	
8	90109-06797-00	BOLT .....	1	
9	90201-08083-00	WASHER, PLATE .....	1	
10	95601-06100-00	NUT, U .....	1	
11	516-82921-30-00	HOLDER, LEVER 2 .....	1	
12	23X-83922-00-00	LEVER 2 .....	1	
13	97003-06022-00	BOLT, HEXAGON .....	1	
14	92995-06100-00	WASHER, SPRING .....	1	
15	90109-06797-00	BOLT .....	1	
16	90201-08083-00	WASHER, PLATE .....	1	
17	95601-06100-00	NUT, U .....	1	
18	431-26281-01-98	CAP, GRIP UPPER (431-26281-01) .....	1	
19	431-26282-01-98	CAP, GRIP LOWER .....	1	
20	98580-05016-00	SCREW, PAN HEAD .....	2	
21	583-26242-00-00	GRIP RH (R.H.) .....	1	
22	1W1-26249-00-00	RING, LEAF .....	1	
23	431-26243-00-00	TUBE, THRTL GUIDE .....	1	
24	2K8-26311-01-00	CABLE, THROTTLE 1 (1130MM) .....	1	
25	2K7-26335-00-00	CABLE, CLUTCH (1150MM) ...	1	
26	382-26372-01-00	. COVER, HANDLE LEVER ...	1	
27	1W4-26341-02-00	CABLE, BRAKE (1230MM) ....	1	
28	382-26372-01-00	. COVER, HANDLE LEVER ...	1	

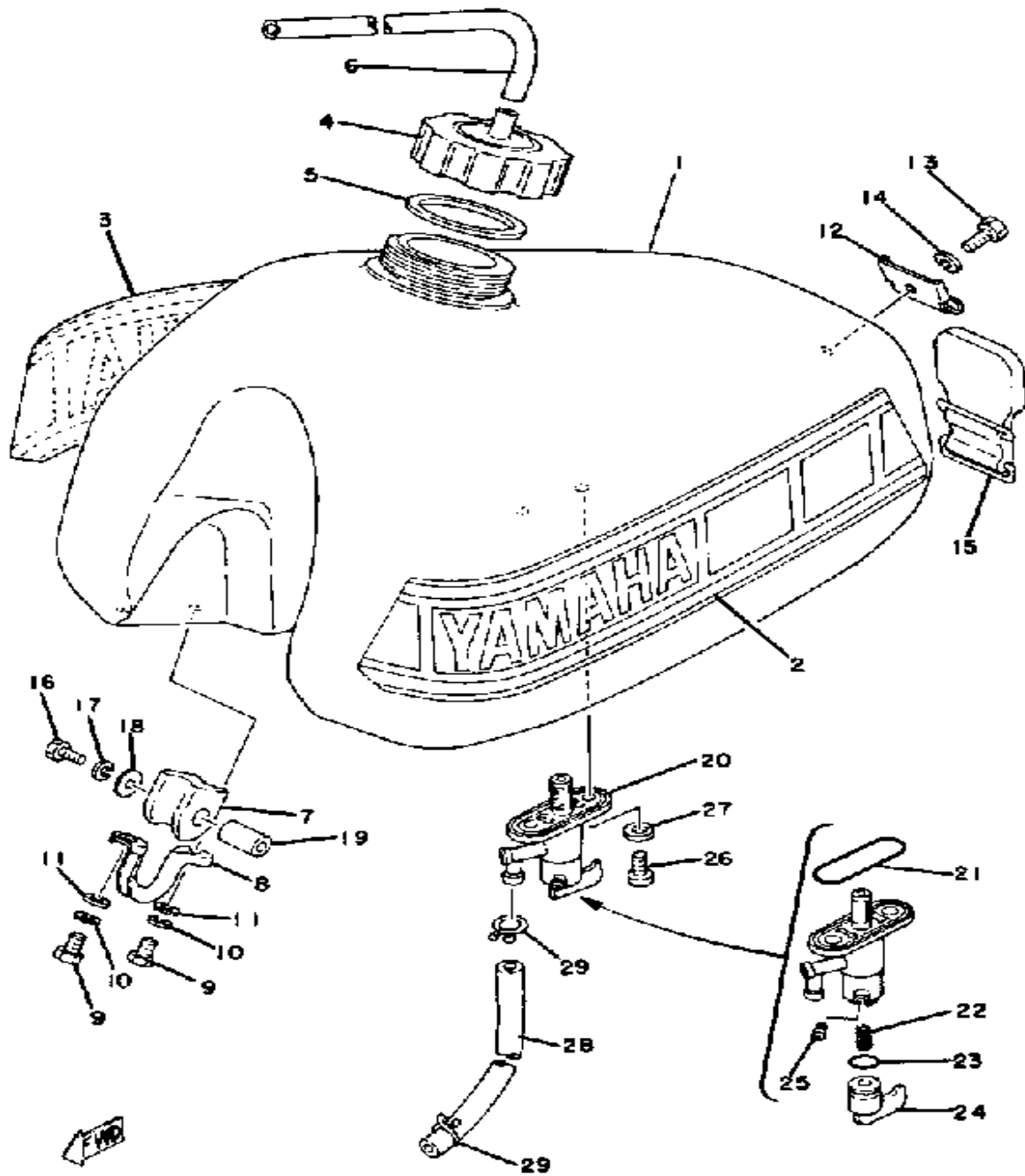
CONTINUED ON NEXT FRAME ►

# HANDLE - WIRE

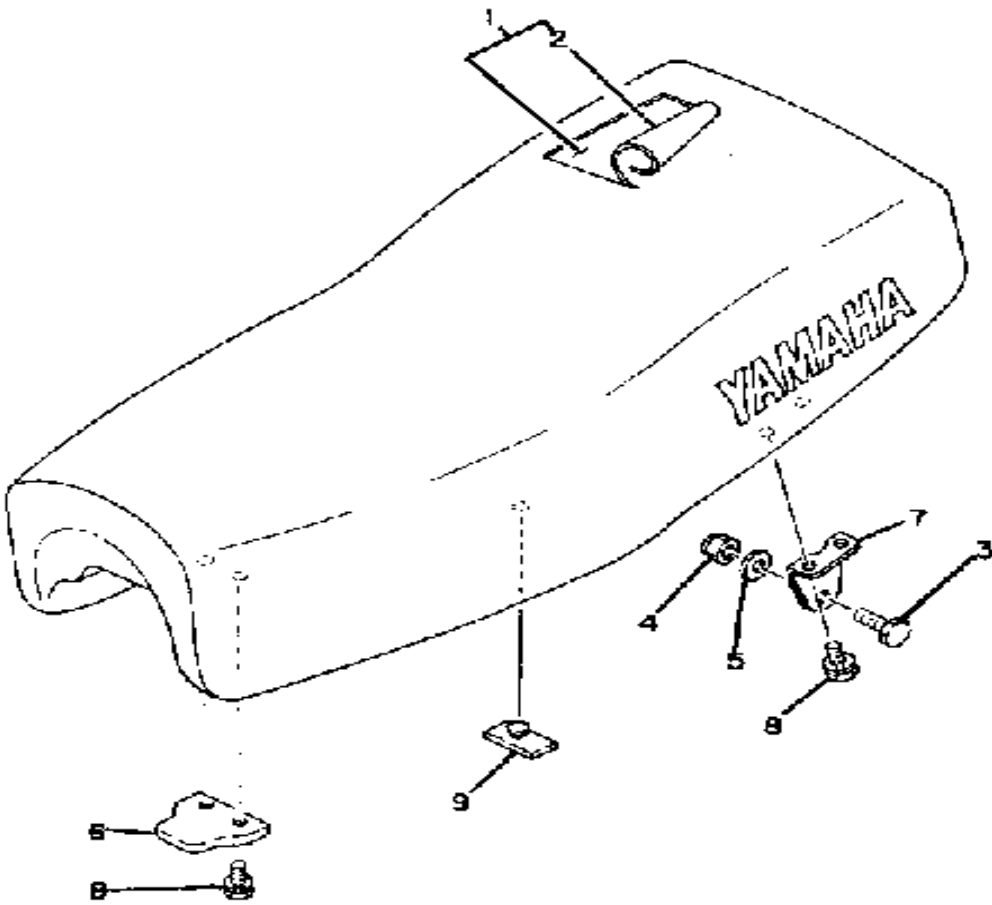


Ref. No.	Part Number	Description	Qty	Remarks
29	90123-08013-00	BOLT .....	1	
30	90123-08046-00	BOLT .....	1	
31	90179-08148-00	NUT .....	2	
32	156-26347-00-00	JOINT, CABLE .....	1	
33	90240-08013-00	PIN, CLEVIS .....	1	
34	90201-08083-00	WASHER, PLATE .....	1	
35	91490-20020-00	PIN, COTTER (91401-20020-00)	1	
36	437-83936-01-00	BAND, SWITCH CORD .....	2	
37	437-83936-11-00	BAND, SWITCH CORD .....	1	

# FUEL TANK



Ref. No.	Part Number	Description	Qty	Remarks
1	(2X4-24110-00-00)	FUEL TANK .....	1	COMP. YELLOW
2	2X4-24244-20-00	GRAPHIC, FUEL TNK 1 .....	1	
3	(2X4-24245-20-00)	GRAPHIC, FUEL TNK 2 .....	1	
4	1W1-24611-00-00	BODY, CAP .....	1	
5	1W1-24612-00-00	GASKET, CAP .....	1	
6	90445-09361-00	HOSE .....	1	
7	1W1-24182-01-00	DAMPER, LOCATING 2 .....	2	
8	1W1-24144-01-00	HOLDER, DAMPER .....	2	
9	97013-06012-00	BOLT .....	4	
10	92995-06100-00	WASHER, SPRING .....	4	
11	92901-06600-00	WASHER .....	4	
12	1W1-24192-00-00	BRACKET, FUEL TNK 2 .....	1	
13	97013-06012-00	BOLT .....	1	
14	92995-06100-00	WASHER, SPRING .....	1	
15	1W1-24173-00-00	BAND, TNK FITTING 1 .....	1	
16	97013-06035-00	BOLT .....	2	
17	92995-06100-00	WASHER, SPRING .....	2	
18	90201-06407-00	WASHER, PLATE .....	2	
19	90387-07393-00	COLLAR .....	2	
20	2K5-24500-00-00	FUEL COCK ASSEMBLY 1 ...	1	
21	214-24512-00-00	. GASKET .....	1	
22	1A0-24529-01-00	. SPRING .....	1	
23	1A0-24512-00-00	. GASKET .....	1	
24	1A0-24524-01-00	. LEVER, COCK .....	1	
25	619-24535-00-00	. SCREW, LVR FITTING .....	1	
26	90149-06011-00	SCREW .....	2	
27	90202-05187-00	WASHER, PLATE .....	2	
28	90445-11182-00	HOSE .....	1	
29	90467-10008-00	CLIP .....	2	

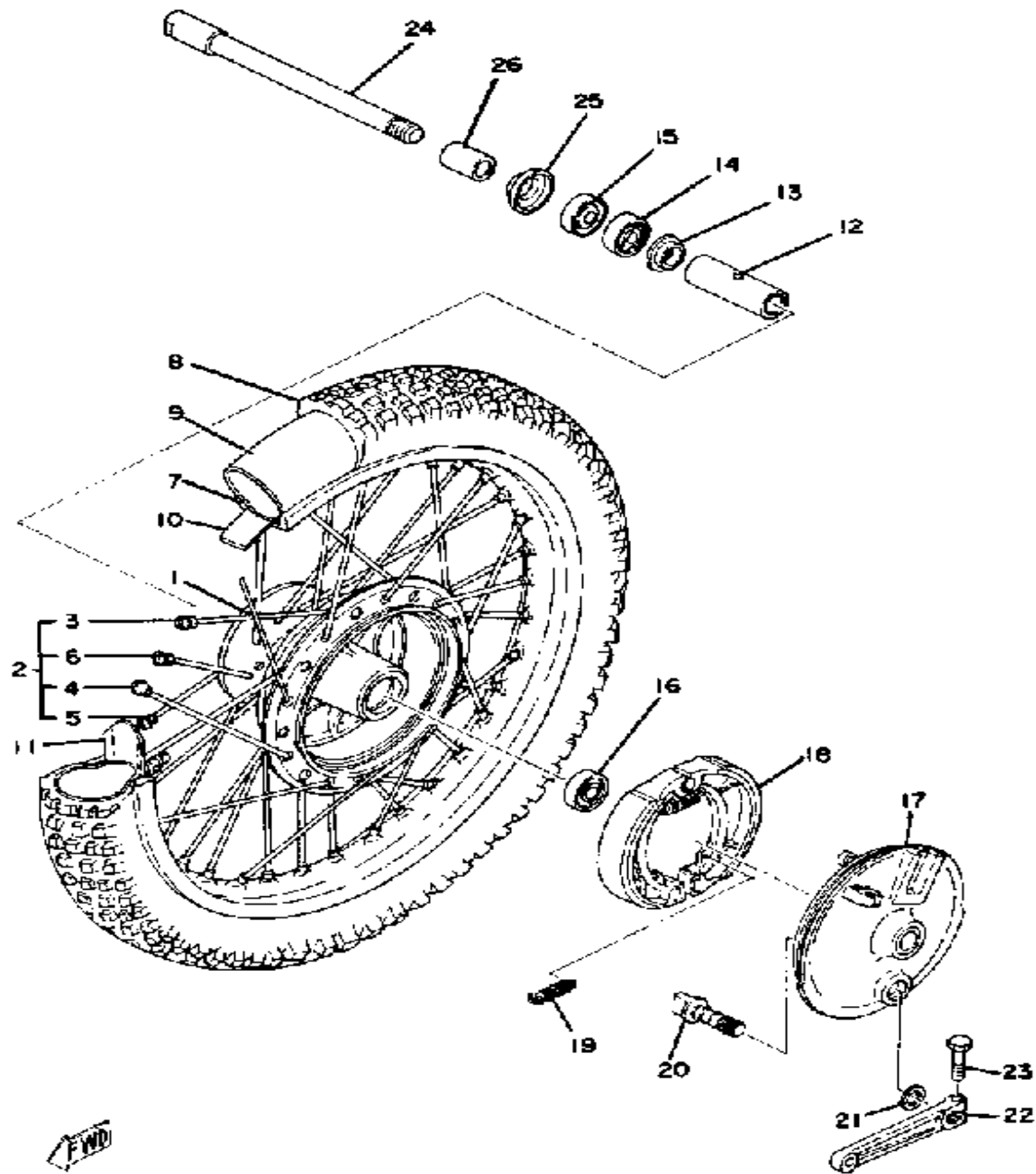


# SEAT

Ref. No.	Part Number	Description	Qty	Remarks
1	(2X4-W2473-00-00)	SEMI-DBL-SEAT ASSEMBLY ..	1	
2	3R4-24771-00-00	. COVER, SM-DBL SEAT .....	1	
3	97013-06035-00	BOLT .....	2	
4	95601-06100-00	NUT, U .....	2	
5	92990-06200-00	WASHER, PLAIN .....	2	
6	1M1-24748-00-00	BRACKET, SEAT .....	1	
7	1W1-24738-00-00	BRACKET, SEAT .....	2	
8	90101-06304-00	BOLT .....	6	
9	509-24724-00-00	DAMPER, SEAT .....	6	

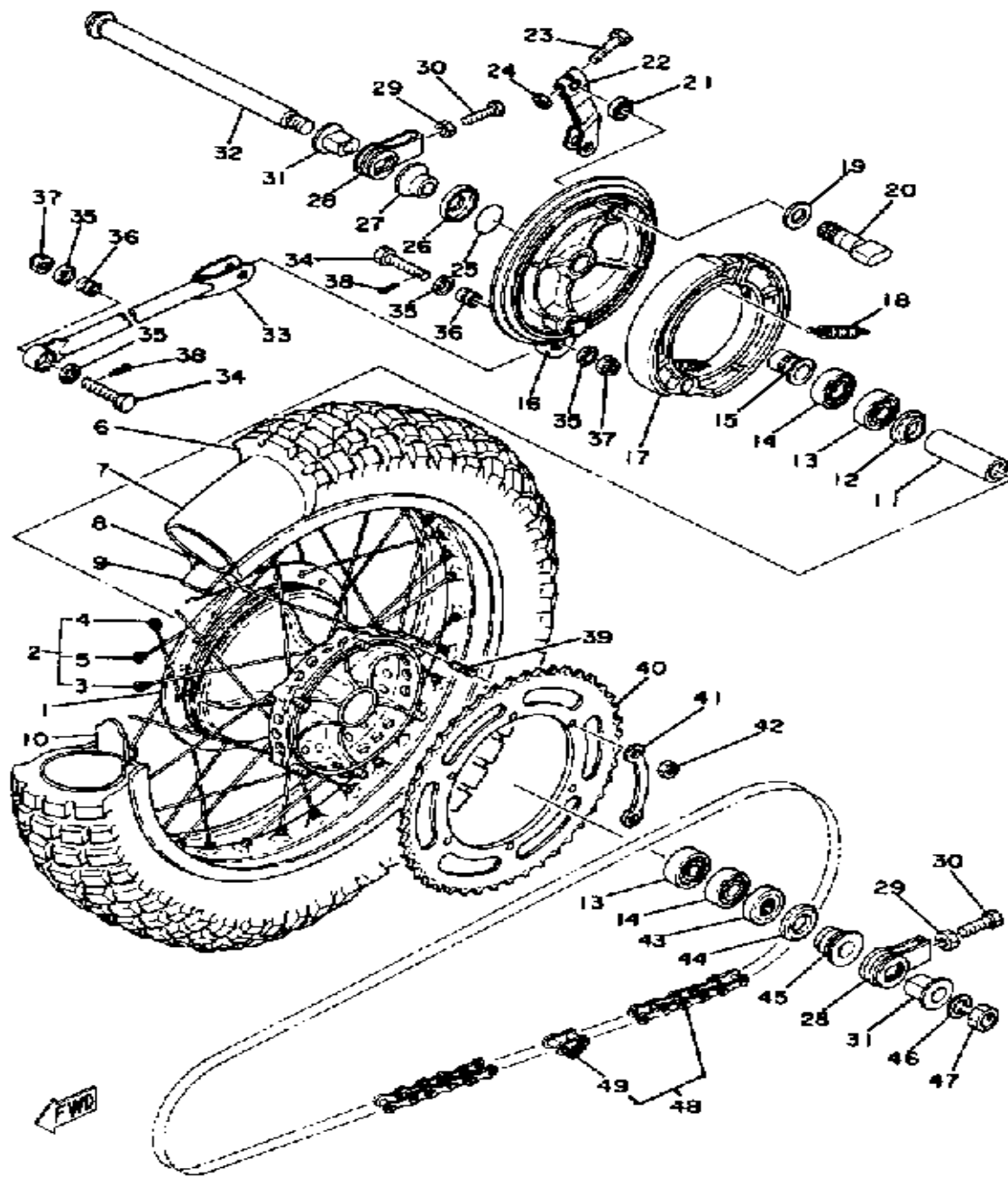
FWD

# FRONT WHEEL



Ref. No.	Part Number	Description	Qty	Remarks
1	1K7-25111-10-98	HUB, FRONT	1	LOW GLOSS BLK
2	2W6-25104-02-00	SPOKE SET, FRONT	1	
3	(2W6-25196-90-00)	SPOKE SET, INNER 1	1	
4	(2W6-25197-90-00)	SPOKE SET, OUTER 1	1	
5	(2W6-25179-90-00)	SPOKE SET, INNER 2	1	
6	(2W6-25189-90-00)	SPOKE SET, OUTER 2	1	
7	94416-21326-00	RIM 1.60X 1	1	
8	(94130-213A4-00)	300-21 M1B (TT)	1	
9	94230-21126-00	TUBE	1	
10	(94330-21088-00)	BAND, RIM	1	
11	1T1-25194-00-00	SPACER, BEAD	1	
12	90560-15116-00	SPACER	1	
13	146-25116-00-00	FLANGE, SPACER 2	1	
14	93306-20209-00	BEARING	1	
15	93102-20009-00	OIL SEAL, SD-TYPE	1	
16	93306-20226-00	BEARING	1	
17	1W1-25016-11-98	BRAKE SHOE PLT ASSEMBLY (1W1-25121-02-98)	1	LOW GLOSS BLK
18	322-W2535-00-00	BRAKESHOE SET-2PCS	2	
19	90506-17328-00	SPRING, TENSION	2	
20	23X-25151-00-00	CAMSHAFT	1	
21	137-25159-00-00	SEAL, CAMSHAFT	1	
22	322-25155-00-00	LEVER, CAMSHAFT 1	1	
23	90101-06291-00	BOLT	1	
24	509-25181-00-00	AXLE, WHEEL	1	
25	322-25118-00-00	COVER, HUB DUST	1	
26	90387-152J3-00	COLLAR	1	

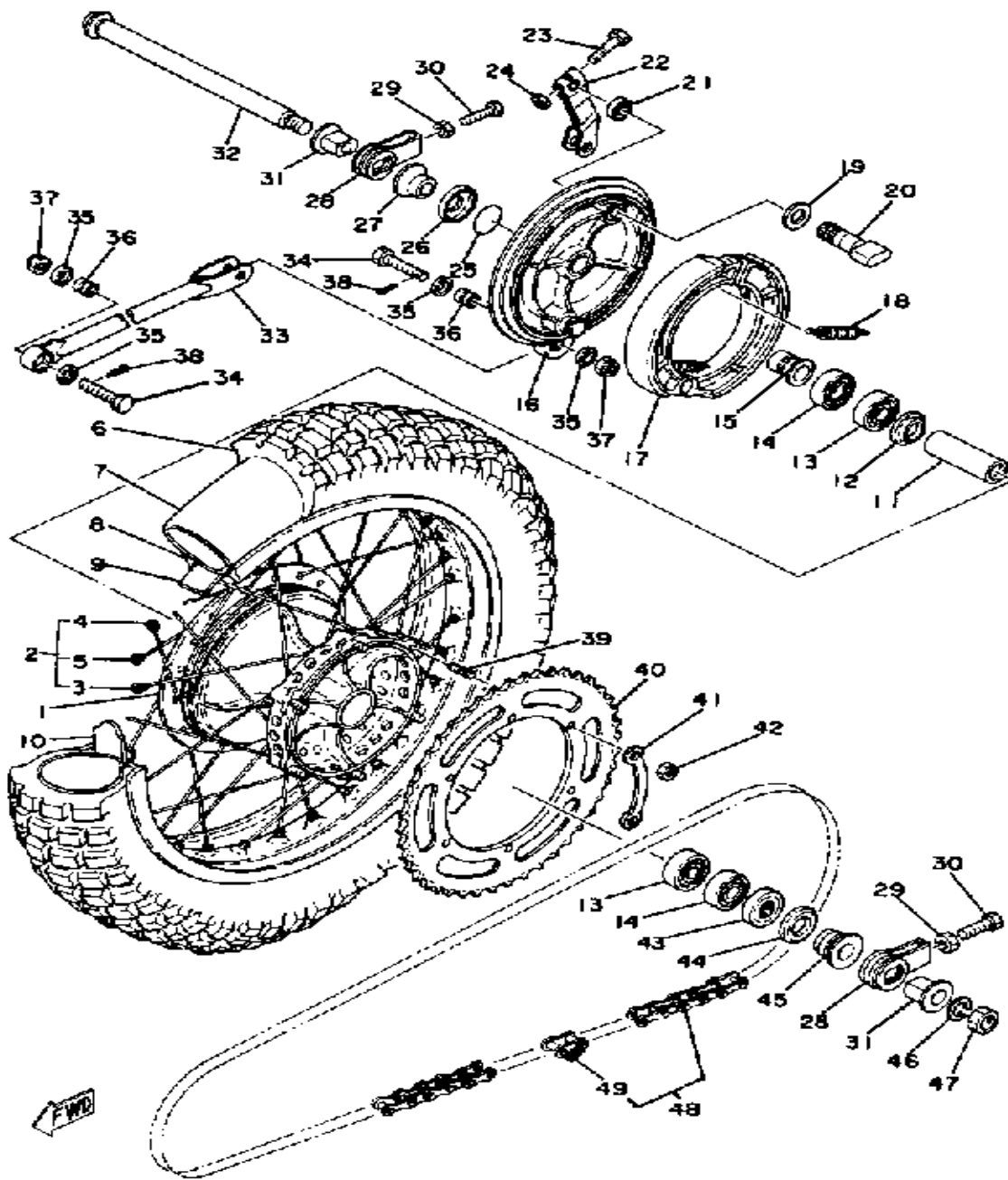
# REAR WHEEL



Ref. No.	Part Number	Description	Qty	Remarks
1	(483-25311-13-98)	HUB, REAR	1	
2	431-25304-01-00	SPOKE SET, REAR (431-25304-00)	1	
3	(431-25396-90-00)	SPOKE SET, INNER 2	1	
4	(431-25391-90-00)	SPOKE SET, INNER 1	1	
5	(431-25392-90-00)	SPOKE SET, OUTER 1	1	
6	94115-186A2-00	150/80-18 M2A (TT) (94151-18684) (4.50-18-4PR)	1	
7	94245-18125-00	TUBE	1	
8	94421-18238-00	RIM 2.15X18 (94421-18151) (2.15-18)	1	
9	94345-18081-00	BAND, RIM	1	
10	1T1-25394-01-00	SPACER, BEAD	2	
11	483-25317-01-00	SPACER, BEARING	1	
12	483-25315-00-00	FLANGE, SPACER	1	
13	93306-20310-00	BEARING (B6203DU)	2	
14	93306-20310-00	BEARING (B6203DU)	2	
15	(90387-17700-00)	COLLAR	1	
16	(2X4-25321-00-98)	PLATE, BRAKE SHOE	1	LOW GLOSS BLK
17	2X4-W2536-00-00	BRAKESHOE SET-2PCS	2	
18	90507-20002-00	SPRING, TENSION	2	
19	148-25353-00-00	SHIM, CAMSHAFT	1	
20	1E6-25151-00-00	CAMSHAFT	1	
21	148-25359-00-00	SEAL, CAMSHAFT	1	
22	2X4-25355-00-00	LEVER, CAMSHAFT	1	
23	90101-06278-00	BOLT	1	
24	95380-06600-00	NUT, HEXAGON	1	
25	93210-31114-00	O-RING	1	
26	275-25327-00-00	COVER, PLATE	1	
27	(90387-17651-00)	COLLAR	1	

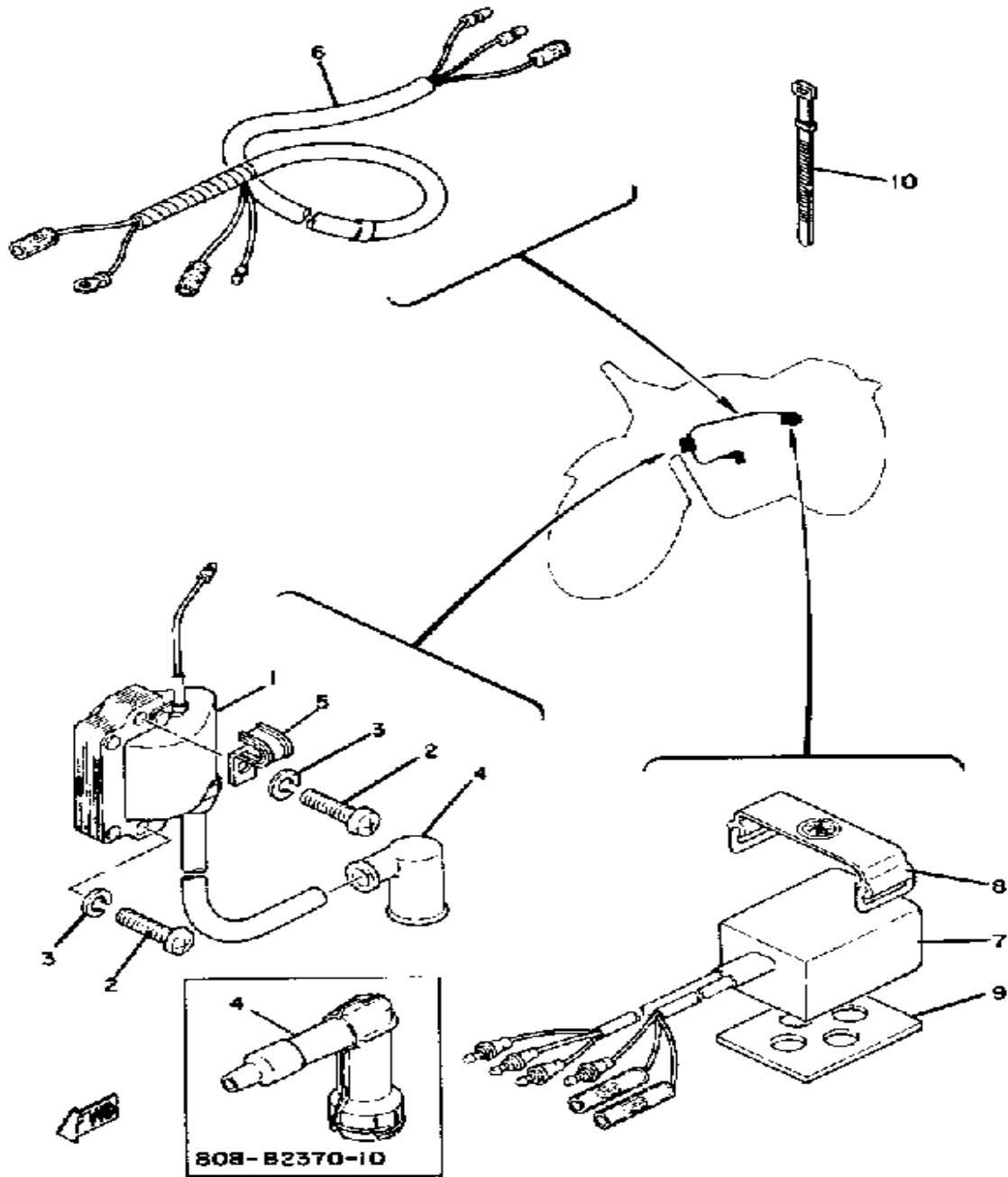
CONTINUED ON NEXT FRAME ►

# REAR WHEEL



Ref. No.	Part Number	Description	Qty	Remarks
28	2K8-25388-00-00	PULLER, CHAIN 1	2	
29	95303-08700-00	NUT	2	
30	90101-08699-00	BOLT	2	
31	90381-17027-00	BUSH, SOLID	2	
32	2K8-25381-00-00	AXLE, WHEEL	1	
33	2X4-25371-00-00	BAR, TENSION	1	
34	90102-08034-00	BOLT, WITH HOLE	2	
35	93104-11056-00	OIL SEAL, SO-TYPE	4	
36	90387-08699-00	COLLAR	2	
37	95611-08100-00	NUT, U	2	
38	91490-20020-00	PIN, COTTER (91401-20020-00)	2	
39	90116-08218-00	BOLT, STUD	6	
40	(431-25448-04-XX)	SPROCKET, DRIVN 48T	1	U.R. STD
	(431-25452-04-XX)	SPROCKET, DRIVN 52T	1	U.R.
	431-25450-04-XX	SPROCKET, DRIVN 50T	1	U.R.
41	583-25412-00-00	WASHER	3	
42	90170-08193-00	NUT, HEXAGON	6	
43	93102-25061-00	OIL SEAL, SD-TYPE	1	
44	431-25367-00-00	COVER, HUB DUST	1	
45	90387-17650-00	COLLAR	1	
46	92901-16100-00	WASHER, SPRING	1	
47	90170-16177-00	NUT, HEXAGON	1	
48	94585-20108-00	520 DS 108L (520DS-108L)	1	
49	94680-11001-00	. JOINT CHAIN	1	

# ELECTRICAL



Ref. No.	Part Number	Description	Qty	Remarks
1	2X6-82310-10-00	IGNITION COIL ASSEMBLY ...	1	
2	98511-06025-00	SCREW PAN HEAD .....	2	
3	92995-06100-00	WASHER, SPRING .....	2	
4	294-82370-00-00	PLUG CAP ASSEMBLY .....	1	
5	90462-05005-00	CLAMP .....	1	
6	(2X4-82590-00-00)	WIRE HARNESS ASSEMBLY ..	1	
7	(2X4-85540-10-00)	CDI UNIT ASSEMBLY .....	1	
8	122-82131-00-00	BAND, BATTERY .....	1	
9	1M2-85547-00-00	DAMPER .....	1	
10	437-83936-01-00	BAND, SWITCH CORD .....	1	

# GASKET KIT

Ref. No.	Part Number	Description	Qty	Remarks
10	(2X4-00000-20-00)	GSKTKIT YZ250F .....	1	
	1W3-11181-00-00	. GASKET, CYLINDER HEAD 1	1	
	2K7-11351-00-00	. GASKET, CYLINDER .....	1	
	2K7-15451-00-00	. GASKET, CRCS COVER ....	1	
	2K7-15462-00-00	. GASKET, CRCS CVR 3 .....	1	
	80L-13621-01-00	. GASKET, VALVE SEAT .....	1	
	90430-06016-00	. GASKET .....	1	
	93210-29282-00	. O-RING .....	1	